

SINOFLOREAL



ARTIFICIAL FLORAL
COLLECTION 2025

ARTIFICIAL FLOWERS
GREENERY & PLANTS

sinofloral.com
BY SINOFLOREAL TEAM

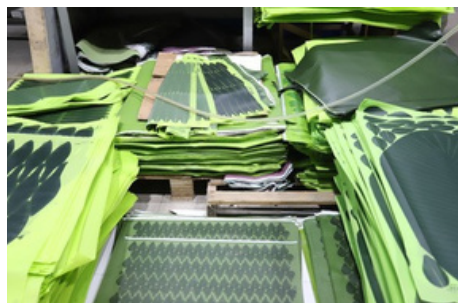
COMPANY PROFILE

About SINOFLORAL

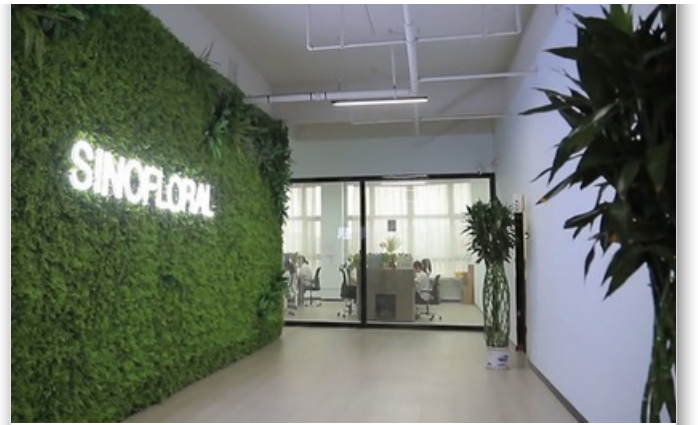
Sinofloral, established in 2006, is a renowned artificial flower factory based in China, specializing in a wide range of high-quality artificial flowers, plants, greenerys and trees.

With over two decades of experience in the industry, Sinofloral has become a trusted name in the B2B wholesale market.

- Customization: We offer customizable color options to meet specific client requirements, ensuring a personalized product experience. Efficient Sales
- Team: Our dedicated sales team is committed to providing prompt and professional service, ensuring a smooth and efficient customer experience. After-
- Sales Service: We believe in building lasting relationships with our clients, and our after-sales service is a testament to this commitment.



Office



Certificate



BSCI Report

Why Real Touch Flower



Why Choose Soft-Touch Flowers? Premium Pays Off!

— Turn Short-Term Costs into Long-Term Value —

1. Luxury Feel, Premium Pricing Power

✗ Regular silk flowers: Plastic look | Stiff petals | Cheap feel repels high-end buyers

✓ **Soft-Touch Flowers: True-to-life texture + Skin-friendly coating**

→ Feels like real blooms | Soft, resilient petals | **Lifts prices 30%+** with premium appeal

2. Hidden Costs Plummet, Save More Over Time

✗ Regular silk flowers: 15% monthly restocking rate | Returns pile up | Fades in 3 months

✓ **Soft-Touch Flowers:**

📉 **90% less damage** | 2-year colorfastness certification | **Cost per use = 1/3 of silk flowers**

3. Conquer Any Space, Expand Profit Zones

✗ Regular silk flowers: Fades in sun/shrinks in humidity | Unsafe for kids/pets | Banned in luxury venues

✓ **Soft-Touch Flowers:**

☀️ Moisture resistant | Perfect for pet stores/play zones | **Adopted by hotels/luxury boutiques**

"You're not paying for flowers—You're investing in:

✓ **Zero after-sales headaches** ✓ **Zero restock stress** ✓ **Customer wow factor"**



7 Colors Real Touch Faux Rose Silk Flower-25.5"

Item No.: 18725001

Description

With realistic details that perfectly mimic nature, this moisturizing imitation faux rose deserves to be the center of attention.

Just decorate a large table vase with a few stems.

Product Specification

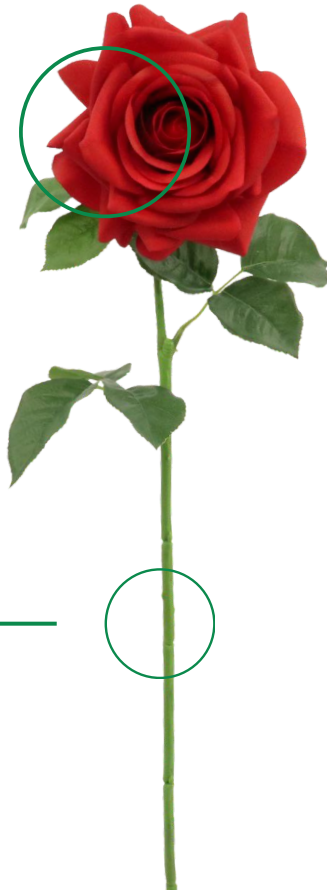
- 25.5" Tall, 5.1" Wide Bloom
- Rubber Silk Leaves
- Real Touch & Latex Material
- Polyethylene, Plastic, Wire
- Natural Curvature
- Available in Seven Colors
- Wired stems are easy to bend.
- Size and color can be customized.
- Packing: 118*37*62
- Packaging Rate: 24*240



Real touch Latex Rose



Full-bloom rose heads with rich, natural petal layers – premium, latex finish



18725001-RD



Thick, real touch foliage – not typical cheap leaves



Gracefully curved stems with authentic color gradients – no flat plastic green



Protective Polymer-coated Stems
Polyethylene, Plastic, Wire



18725001-FU



18725001-PK



18725001-OR



18725001-YW



18725001-WTGN



18725001-WT



3 Heads Latex Real Touch Faux Rose - 29"

Item No.: 18725007-PK

Description

Elevate your decor with the timeless beauty of the real touch Rose.

Perfect for creating dramatic bouquets or adding a sophisticated touch to your space, this 3 heads artificial rose offers maintenance-free beauty.

Product Specification

- 29.9" Tall, 4.7"/3.1"/1.2" Wide Bloom
- 3 Heads
- Real Touch & Latex Material
- Polyethylene, Plastic, Wire
- Polymer-coated Stems
- Wired stems are easy to bend.
- Size and color can be customized.
- Packing: 108*43*74
- Packaging Rate: 12*144



Real Touch Rose



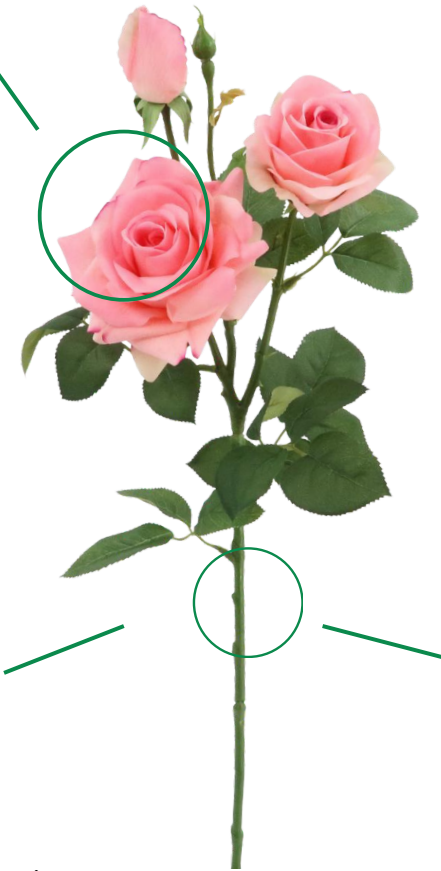
Full-bloom rose heads with rich, natural petal layers – premium, latex finish



Tightly wrapped buds with lifelike petal folds. Natural gradient blush from base to tip – no uniform artificial hue



Gracefully curved stems with authentic color gradients – no flat plastic green



Thick, real touch foliage – not typical cheap leaves





Fuchsia 3 Heads Real touch Latex Rose-26" Tall

Item No.: 18725009

Description

This moisturizing imitation Rose features beautiful natural touch, rose blooms in a perfect classic fuchsia hue. Decorate a bouquet of artificial roses in your favorite vase for an effortlessly elegant floral design.

Product Specification

- 26.7" Tall, 3.9"/3.9"/0.8" Wide Bloom
- 2 Heads+1 Floral Bud
- Rubberized Fabric Material
- Gradient-colored Petals
- Polyethylene, Plastic, Wire
- Protective Polymer-coated Stems
- Available in Two Colors
- Wired stems are easy to bend.
- Size and color can be customized.
- Packing: 108*43*74
- Packaging Rate:12*144
- MOQ:144pcs



Real touch Latex Rose



Full-bloom rose heads with rich, natural petal layers – premium, latex finish



Protective Polymer-coated Stems
Polyethylene, Plastic, Wire



Thick, real touch foliage – not typical cheap leaves



Gracefully curved stems with authentic color gradients – no flat plastic green



Safety and careful packaging



18725009-FU



18725009-PK

Artificial Dahlia Flowers



6 Heads Purple Artificial Dahlia Flower-27"

Item No.: 15825011-PU

Description

Bring timeless elegance to your displays with our artificial Dahlia flowers. Durable, reusable, and beautifully crafted to mimic the real bloom—perfect for wholesale, event planning, and home styling.

Product Specification

- Overall, 27.95" Tall
- 6 Heads
- Silk Flower Head
- Polyurethane, Plastic, Wire
- Clear Texture Stem
- Wired stems are easy to bend.
- Size and color can be customized.
- Packing: 120*52*52



Artificial Dahlia Flowers



Silk-satin petals with seamless ombré coloring
– each layer pre-molded for dimensional fullness and luxuriously soft texture



Silk-screened leaves with permanent organic curve – realistically serrated edges and matte veined texture



Reinforced plastic-wrapped iron stem – deep green vertical striations and earthy undertones, avoids flat plastic-green uniformity



Botanically accurate deep-toned buds – intricate calyx detailing with natural gradient pigmentation



Real Touch Corn Poppy Flower

Real Touch Faux Latex Poppy Flowers - 25"

Item No.: 18725004

Description

Like this elegant real touch poppy stem, enjoy the elevated beauty of lifelike artificial flowers that don't require water!

These poppies flowers have ultra-realistic details, making them perfect replicas of nature.

Product Specification

- 25.1" Tall, 3 Heads+1 Floral Bud
- Available in Four Colors
- Real Touch & Latex Material
- Polyethylene, Plastic, Wire
- Flocked Stems & Core
- Stems Included Protective Bag
- Wired stems are easy to bend.
- Size and color can be customized.
- Packing: 105*57*50
- Packaging Rate: 24*288



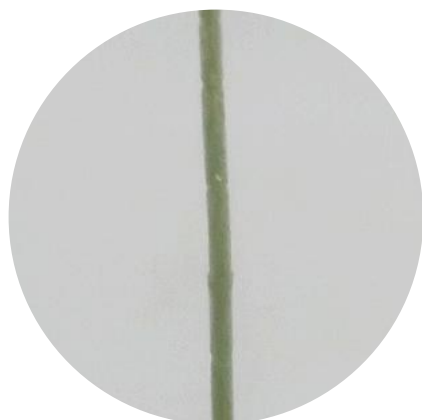
Real Touch Corn Poppy Flower



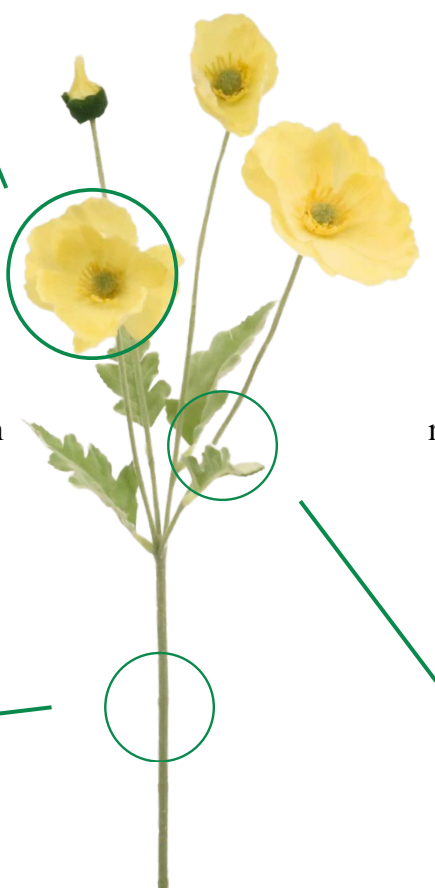
Latex petals with subtle veining – luxuriously soft, true-to-nature touch



Delicately downturned buds – lifelike ribbed texture, natural soft blush gradient



Dust-resistant velvet-flocked stems – mimics real fuzz, resists plastic shine



18725004-YW



Botanically accurate leaves – deep matte greens, flocked texture, never flat plastic



18725004-PK



18725004-BL



18725004-PU

Faux Silk Hydrangea Flower

7 Colors Real Touch Faux Hydrangea Flower- 24"

Item No.: 18725005

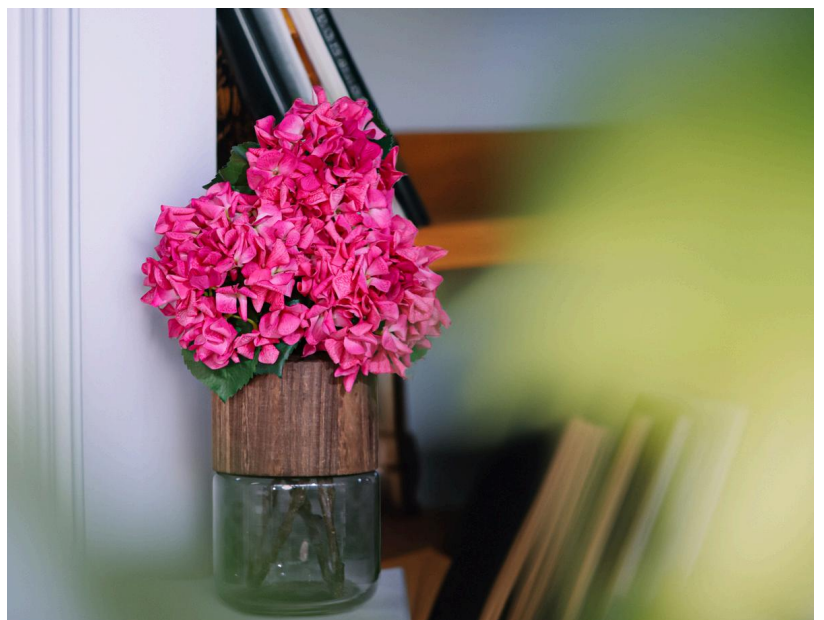
Description

Gorgeous faux hydrangea floral arrangement in vases is a special centerpiece that makes your decoration the focal point.

The details of the flowers instill a sense of nature that brings timeless beauty to the interior.

Product Specification

- 24.4" Tall, 7" Wide Bloom
- 4 Leaves & Rubberized Fabric Leaves
- Real Touch & Latex Material
- Polyethylene, Plastic, Wire
- Curled Hydrangea
- Arched Stems & Natural Curvature
- Wired stems are easy to bend.
- Size and color can be customized.
- Packing: 97*57*57
- Packaging Rate: 12*144



Faux Silk Hydrangea Flower



Real touch premium, latex finish
petals– lifelike micro-veining,
resists synthetic shine



Thick, real touch foliage – not
typical cheap leaves



Naturally mottled stems – raw umber
undertones, avoids flat plastic-green uniformity



18725005-GN



Gracefully curved stems with authentic
color gradients – no flat plastic green



18725005-WT



18725005-PK1



18725005-IB



18725005-BL



18725005-PK2



18725005-FU

Artificial Silk Hydrangea Flower

3 Colors Latex Artificial Hydrangea Flower-24"

Item No.: 18725003

Description

Stunningly beautiful, this 24.4" hydrangea silk flower bring timeless elegance to your decor.

Featuring lush, lifelike petals in a clear hue, this plant-inspired bloom adds a classic touch to any arrangement.

Product Specification

- 24.4" Tall, 7" Wide Bloom
- Serrated-Edge Petals & Ruffled Leaves
- Real Touch & Latex Material
- Polyethylene, Plastic, Wire
- Arched Stems with Specific Color
- Wired stems are easy to bend.
- Size and color can be customized.
- Packing: 97*57*57
- Packaging Rate: 12*144



Artificial Silk Hydrangea Flower



Real touch premium, latex finish
petals– lifelike micro-veining,
resists synthetic shine



Clear, silk-printed foliage – not
typical cheap leaves



Naturally mottled stems – raw umber
undertones, avoids flat plastic-green uniformity



18725003-BRNRD



Gracefully curved stems with authentic
color gradients – no flat plastic green



18725003-BKPU



18725003-BKRD

Artificial Delphinium Flower



Real Touch Latex Faux Delphinium Flower -35.4"

Item No.: 18725008

Description

Elevate your floral designs with the timeless beauty of the artificial Delphinium flower.

Enhancing wedding arches with timeless elegance or decorating your table, these faux flowers maintain their lush vibrancy.

Product Specification

- 35.4" Tall,
- Blooming Portion, 13.8" Tall
- 2 Forks
- Real Touch & Latex Material
- Polyethylene, Plastic, Wire
- Gradient-colored Stem
- Available in Three Colors
- Wired stems are easy to bend.
- Size and color can be customized.
- Packing: 108*43*74
- Packaging Rate: 24*288



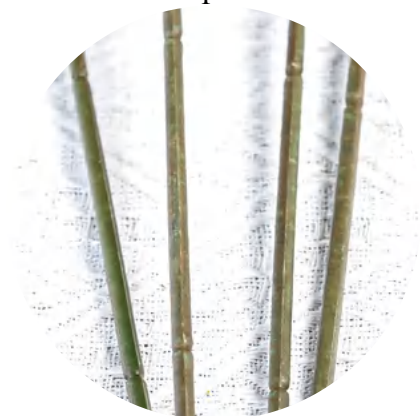
Artificial Delphinium Flower



Latex-crafted petals with a soft, natural touch – lifelike feel, not stiff plastic



True-to-life stem coloring – no flat, artificial-looking green tones



Realistic stems that bend naturally – flexible for arranging with ease



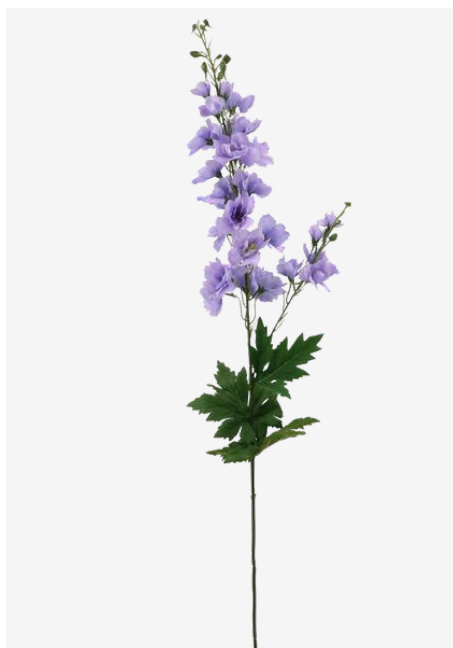
18725008-PK



Thick, silk-printed foliage – premium quality, not the flimsy cheap type



18725008-WT



18725008-PU



18725008-BL

Heliconia Flower Stem



Real Touch Latex Faux Heliconia Flower - 34"

Item No.: 18725011

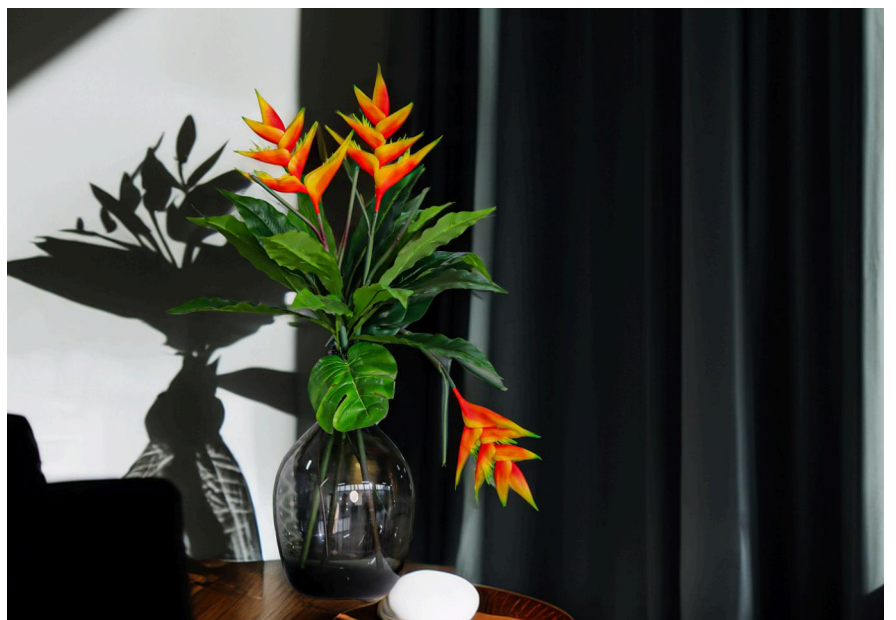
Description

Elevate your decor with this striking 34.25" artificial Heliconia stem, featuring fiery orange-and-crimson blooms.

Display multiple stems in a tall glass vessel to create a focal point in table areas.

Product Specification

- 34.2" Tall
- Blooming Portion, 9.4" Tall
- Rubber Petal Material
- Rubber Tube, Wire
- Gradient-colored Stem
- Clear Texture
- Available in Four Colors
- Wired stems are easy to bend.
- Size and color can be customized.
- Packing: 85*45*50
- Packaging Rate: 12*144



Heliconia Flower Stem



Latex-finished petals with a true-to-touch texture – rich, natural feel, not plastic



Realistic stems that bend naturally – flexible for creative styling



Authentic stem coloring – no flat, fake-looking green plastic tones



18725011-PK1



Sealed stem bottoms – no exposed wires for a clean, polished look



18725011-RDBK



18725011-OR



18725011-PK2

Faux Amaryllis Flower Stem



Real Touch Latex Faux Amaryllis Flower -25"

Item No.: 18725013

Description

Exquisitely crafted, this 25" lifelike Amaryllis stem rivals fresh premium blooms with its botanical realism. Ideal for holiday décor, or weddings, its vibrant petals elevate wreaths, and tablescape effortlessly.

Product Specification

- 25" Tall, 7.9" Wide
- Real Touch & Latex Material
- Polyethylene, Plastic, Wire
- Gradient-colored Petals
- Specific Design for Bottom Stem
- Available in Two Colors
- Wired stems are easy to bend.
- Size and color can be customized.
- Packing: 108*43*74
- Packaging Rate: 12*144



Faux Amaryllis Flower Stem



Crafted from high-quality Real Touch material, the petals feature subtle texture and excellent density, providing an incredibly lifelike feel and look.



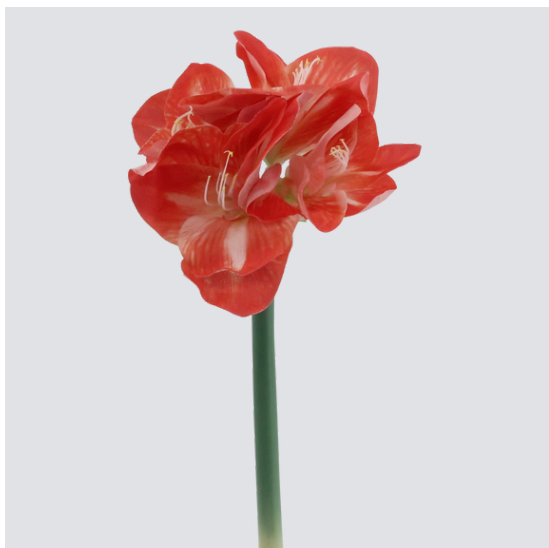
Soft surface mimics the delicate yet structured feel of a fresh flower petal, resisting wrinkles and maintaining the natural bloom shape.



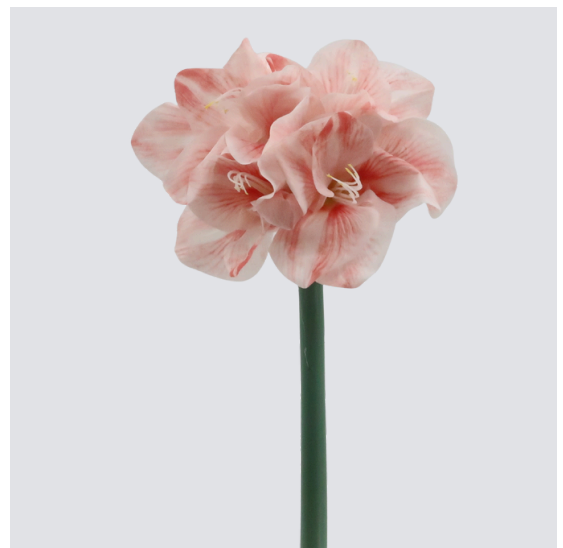
Natural-look stem robust, wired stem coated in a soft, matte green material, allowing for easy, customized arrangement.



Durable and lifelike construction material ensures long-lasting color fidelity and exceptional durability.



18725013-RD



18725013-PK

Artificial Real Touch Tulip Flower Bundle of 5

Item No.: 18625005

Description

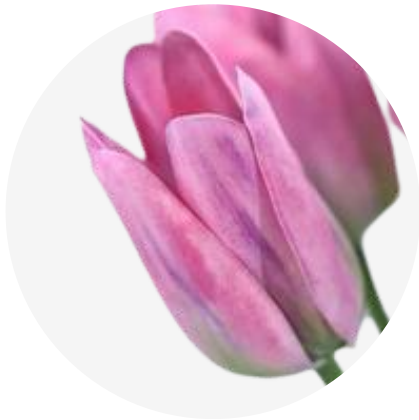
Create a permanent spring floral arrangement with beautiful, real touch tulip flowers that last forever! It's easy to style this faux bundle of white mini artificial, life-like tulips in a vase so you can enjoy nature-inspired.

Product Specification

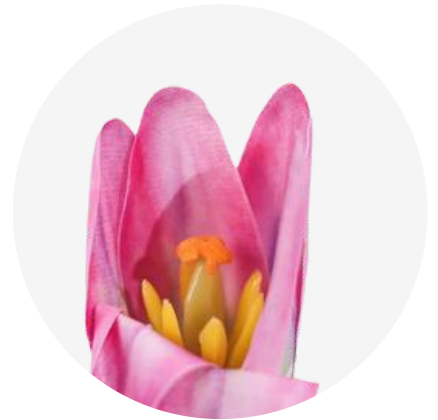
- 12-14.5" Tall
- 12 Blooms, 2" Tall x 1.2" Wide
- Real Touch Blooms Material
- Polyurethane, Plastic, Wire
- Sold by Bundle
- Wired stems are easy to bend.
- For more of the best spring flowers for home décor, visit the Sinofloral Journal!



TULIP



Latex-crafted petals with a soft, real-touch feel – natural and lifelike



True-to-life tulip centers – detailed and authentic in appearance



Realistic stems that bend naturally – easy to shape and arrange



18625005-PK2



Neatly tied with raffia grass – stylish and secure presentation



18625005-OR

18625005-PK1

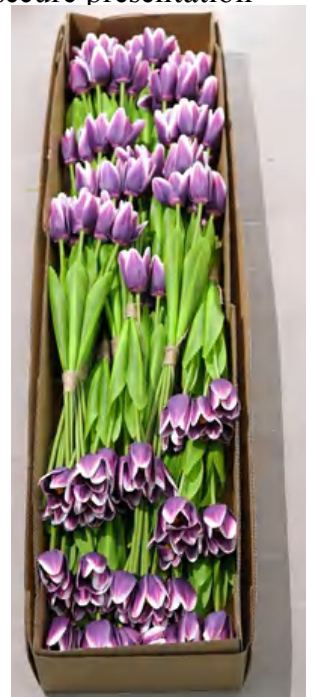
18625005-RD



18625005-PK2

18625005-CM

18625005-PU



Safety and careful packaging

Phalaenopsis Orchid



Purple Faux Phalaenopsis Orchid - 37"

Item No.: 18625004

Description

These crafted artificial botanicals offer perpetual sophistication for contemporary living spaces.

Display multiple silk phalaenopsis orchid sprigs in a tall glass vessel to create an organic-chic focal point in dining areas.

Product Specification

- 37" Tall
- 9 Head, 15.3" Tall
- Real Touch & Latex Material
- Polyurethane, Plastic, Wire
- Clear Texture
- Protective Polymer-coated Stems
- Wired stems are easy to bend.
- Size and color can be customized.
- Packing: 136*73*55
- Packaging Rate: 50*300



Phalaenopsis Orchid



Naturally detailed petal backs – clear and lifelike, just like fresh blooms



True-to-life flower buds – detailed and naturally formed



18625004-PU2



Latex-crafted petals with a soft, real-touch feel – natural and lifelike



Authentic stem coloring with natural black speckles – no flat, plastic green look



18625004-WTPU



18625004-GN



18625004-PU1



18625004-WT

Faux Phalaenopsis Orchid



Real Touch Latex Home Decoration Phalaenopsis Orchid Artificial Flower-38"

Item No.: 30025002

Description

This real touch latex faux Phalaenopsis Orchid brings an exquisite, lifelike touch to your space with its detailed petals and vibrant colors. Crafted with premium latex, this artificial orchid mimics the natural beauty of a real flower while offering lasting durability. Perfect for home decor, weddings, and special events, it adds elegance without the maintenance of live plants.

Product Specification

- Overall, 97cm/38.2" Tall
- 30cm/11.8" Tall Bloom
- 7 Heads
- Latex Bud & Rubber Stem
- Gradient Color
- Flexible and Bendable for Styling
- Packing: 97*42*64



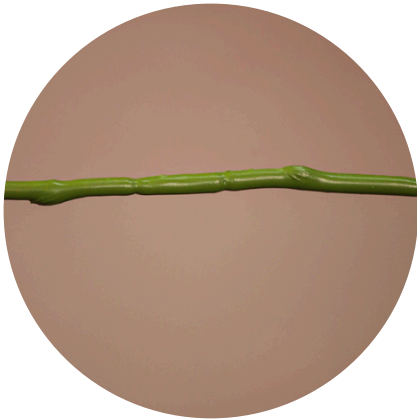
Faux Phalaenopsis Orchid



Exquisite orchid centers – meticulously detailed for a truly authentic look



Latex real touch petals – soft to the touch with a natural, lifelike feel



Flexible textured stems – easy to bend and shape for perfect arrangements



Delicate lifelike buds – realistically graduated sizes for a fresh appearance



30025002-WTPU



30025002-PU

Faux Phalaenopsis Orchid



Artificial Real Touch Latex Phalaenopsis Long Branch- 42"

Item No.: 30025003-WT

Description

Enhance your interior with this stunning Real Touch Latex Faux Phalaenopsis Orchid, designed to look just like a fresh orchid with its realistic texture and vivid hues. Made from high-quality latex, it offers a durable, long-lasting solution for floral arrangements and decorative purposes. Whether used in vases, centerpieces, or as a stand-alone piece, this orchid is ideal for any occasion, providing beauty that lasts year-round.

Product Specification

- Overall, 107cm/42.12" Tall
- 44cm/17.32" Tall Bloom
- 9 Heads
- Real Touch & Latex
- Latex Bud & Rubber Stem
- Size and color can be customized.
- Packing: 117*37*43



Faux Phalaenopsis Orchid



Exquisite orchid centers – meticulously detailed for a truly authentic look



Flexible textured stems – easy to bend and shape



Latex real touch petals – soft to the touch with a natural, lifelike feel



Delicate lifelike buds – realistically graduated sizes for a fresh appearance



Lifelike Artificial Geraldton Wax Flower-33"

Item No.: 18625006

Description

Stunningly beautiful, this 33" silk artificial Geraldton flower can be used in a variety of floral arrangements.

Let your imagination with our faux flower bushes as you explore a multitude of stunning floral centerpieces.

Product Specification

- 33" Tall
- Rubberized Fabric Petal
- Polyurethane, Plastic, Wire
- Available in Four Colors
- Low Maintenance
- Wired stems are easy to bend.
- Size and color can be customized.
- Packing: 110*52*42
- Packaging Rate: 36*360



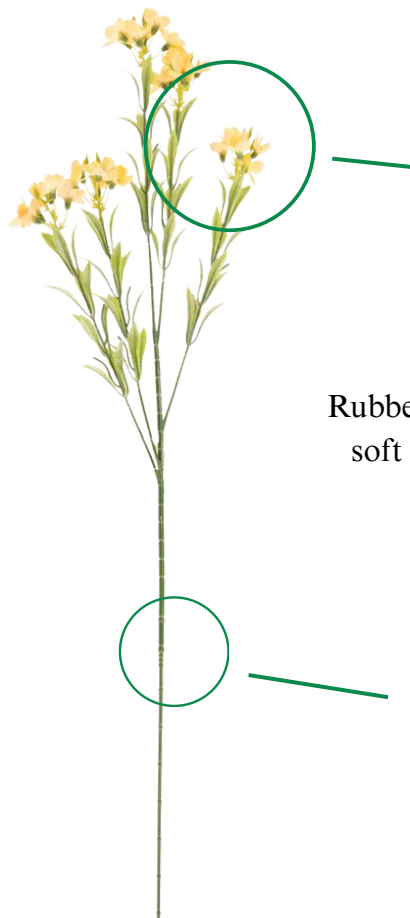
Artificial Geraldton Wax Flower



Thick, plastic foliage – premium quality, not the flimsy cheap type



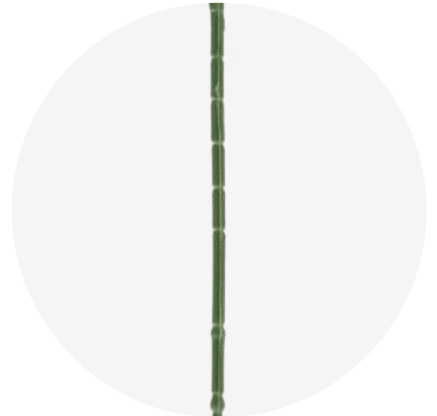
优势材质



18625006-YW



Rubber fabric -crafted petals with a natural soft touch – lifelike feel, not stiff plastic



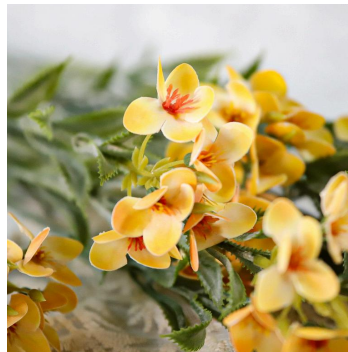
Realistic stems that bend naturally – flexible for arranging with ease



18625006-WT



18625006-PK1



18625006-YW



18625006-PK2

Artificial Bird of Paradise Plants



Real Touch Latex Faux Bird of Paradise - 33.4"

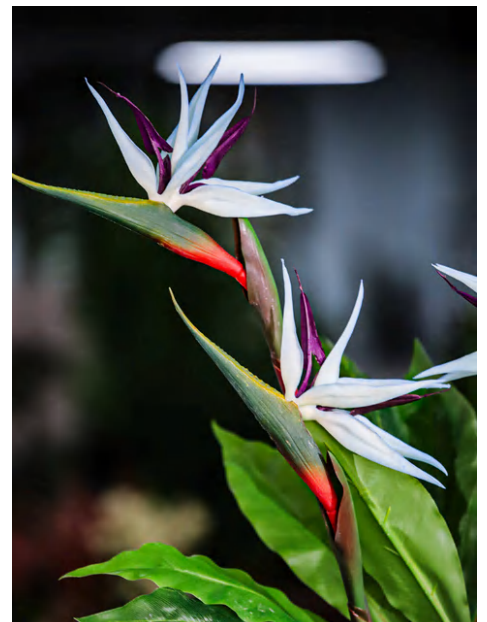
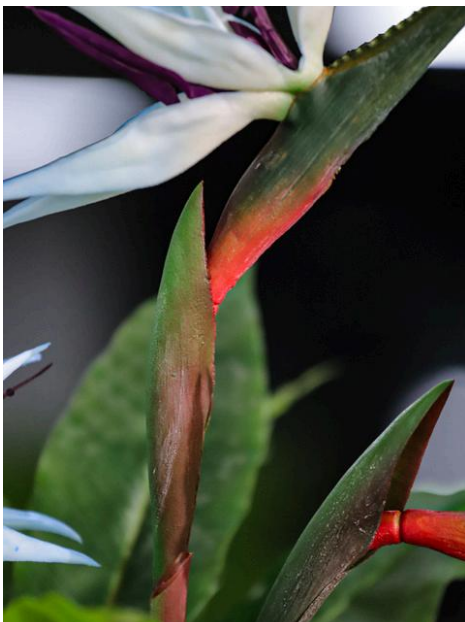
Item No.: 18725012

Description

Infuse your spaces through this handcrafted artificial bird of paradise, featuring gradient-hued orange blossoms. Each reveals delicate veining and organic color transitions and flexible stems create elegance.

Product Specification

- 33.4" Tall
- Blooming Portion, 7.9" Tall
- Rubber Petal
- Rubber Tube Wrapped Stems
- Gradient-colored Design
- Specific Design for Bottom Stem
- Available in Four Colors
- Wired stems are easy to bend.
- Size and color can be customized.
- Packing: 95*43*47
- Packaging Rate: 15*180



Artificial Bird of Paradise Plants



Naturally detailed petal– clear and lifelike, just like fresh blooms



True-to-life stem gradients – no flat, fake-looking plastic green



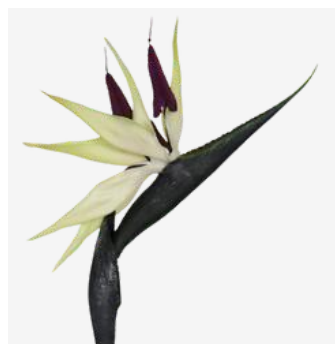
Latex-crafted petals with a genuine touch – ultra-realistic feel, not plasticky



18725012-RD



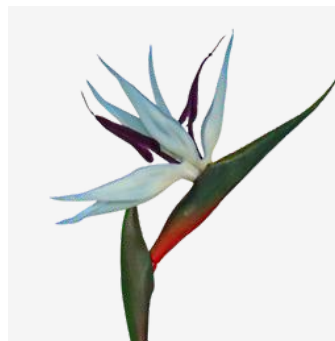
Realistic stems that bend freely – flexible for effortless styling



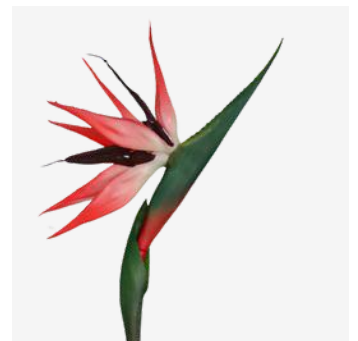
18725012-PUWT



18725012-OR



18725012-BL



18725012-RD



Artificial Sunflower Flower Bud Stem-23.2"

Item No.: 18725010

Description

Stunningly beautiful, this 23.2" artificial sunflower bud stem with its natural-looking blossoms will remain fresh for years.

Perfect for creating wedding bouquets, wreaths and potted arrangements.

Product Specification

- 23.2" Tall
- 4.7" Wide
- White-Tipped Weathered Leaves
- Brown Flocked Rubber Stems
- Gradient-colored Stem
- Thickened Durability
- Available in Three Colors
- Wired stems are easy to bend.
- Size and color can be customized.
- Packing: 95*43*65
- Packaging Rate: 12*144



Sunflower Spray



Latex-crafted calyx with true-to-life color – natural touch, not glossy plastic



Realistic sunflower seeds inside the bud – authentic and lifelike detail



Flexible, natural-looking stems – bendable for easy arranging

18725010-GN



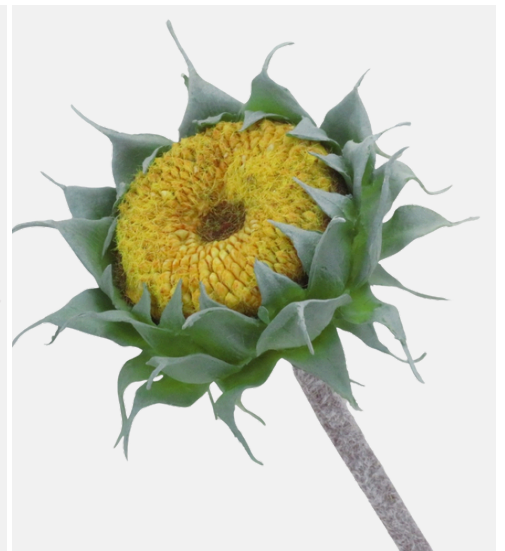
True-to-life stem gradients with flocked surface – no flat, fake plastic green



18725010-BRN



18725010-BK



18725010-YW

Artificial Magnolia Flower

Artificial Magnolia Flower Branch - 31.4"

Item No.: 30225001-WT

Description

Lifelike artificial Magnolia blooms with natural petals and flexible stems. Natural texture mimics fresh flowers, ideal for year-round décor. Fade-resistant, low-maintenance, and perfect for tablescape, weddings, or minimalist interiors.

Product Specification

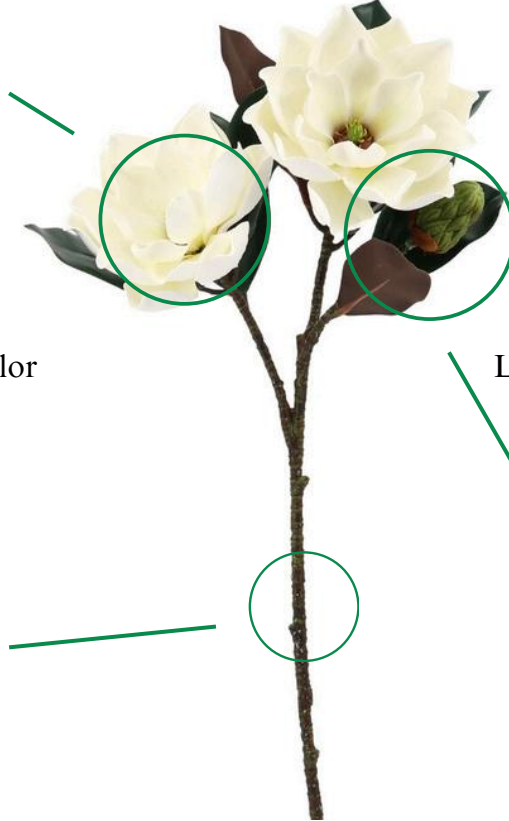
- 31.4" Tall
- 2 Blooms, 6.6" Wide
- Silicone Foam Petals
- Rubberized Fabric Leaves
- Plastic Fruits
- Polyurethane, Plastic, Wire
- Latex-coated Stems with Spiral Texture
- Wired stems are easy to bend.
- Size and color can be customized.
- Packaging: 117*86*69
- Packaging Rate: 12*72



Artificial Magnolia Flower



PU-crafted petals with natural color
– soft real touch, not plasticky



Lifelike magnolia buds – authentic and
true to nature



True-to-life stem coloring with
textured surface – no flat, artificial
green tones



Thick, textured foliage with a natural
feel – premium quality, not flimsy
cheap leaves



Safety and careful packaging

Artificial Magnolia Flower

Artificial Magnolia Flowers with Leaves-31.1"

Item No.: 30225002-PK

Description

Crafted with delicate silk petals and natural-toned stems, this artificial magnolia flower mirrors fresh blooms. Perfect for tabletops, weddings, or year-round decor. No watering needed—enjoy effortless elegance.

Product Specification

- 31.1" Tall
- 2 Blooms, 5.5" Wide
- Silicone Foam Petals
- Rubber Bud Material
- Latex-coated Stems with Spiral Texture
- Polyurethane, Plastic, Wire
- Petals with Natural Gradient Color
- Wired stems are easy to bend.
- Packaging: 117*86*69
- Packaging Rate: 15*120



Artificial Magnolia Flower



PU-crafted petals with true-to-life color – natural touch, not stiff plastic



Naturally shaped branching – realistic form that mimics real magnolia growth



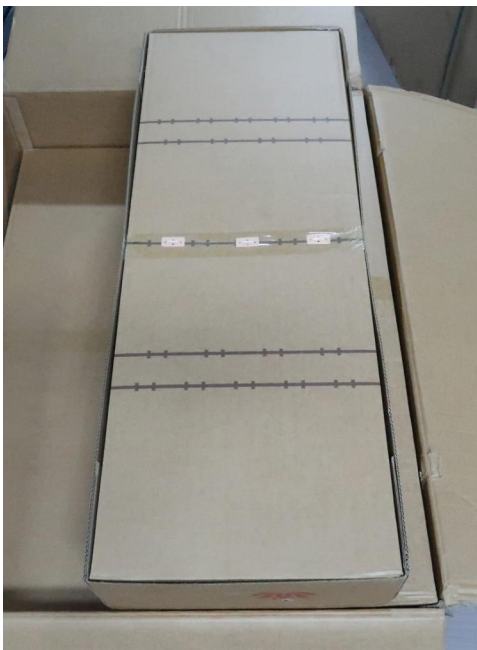
Realistic flower buds – authentic and lifelike detail



30225002-PK



True-to-life stem gradients with textured surface – no flat, fake plastic green



Safety and careful packaging

French Marigold Flower

Faux French Marigold Flower Stem-16.5"

Item No.: 30325001

Description

Bring cheerful color to your floral designs with this French Marigold flower stem. Featuring realistic layered petals and vibrant tones, this faux marigold adds a fresh, garden-inspired feel to any arrangement.

Product Specification

- 16.5" Tall
- Flocked Flower Center
- Buds wrapped in Rubberized Fabric
- Rubber Silk Leaves with a Weathered White Finish
- Polyurethane, Plastic, Wire
- Gradient-colored Petals
- Wired stems are easy to bend.
- Size and color can be customized.



French Marigold Flower



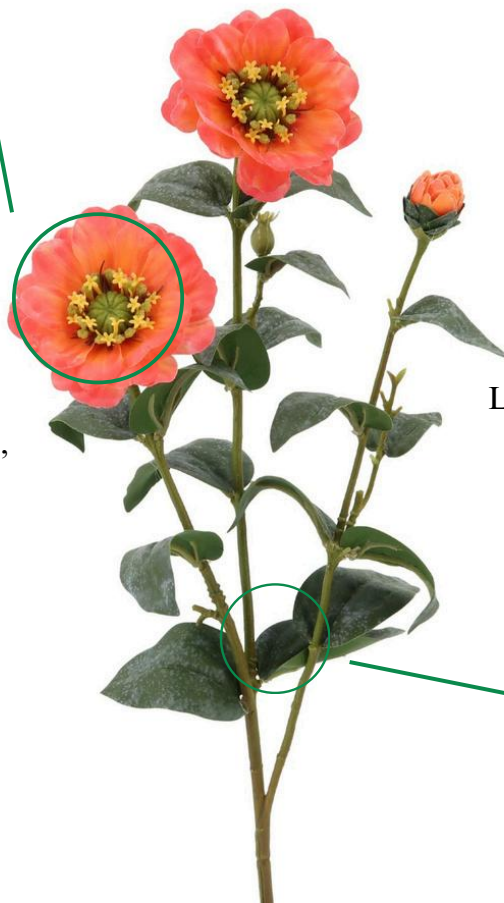
Rubber fabric-crafted petals with natural color – soft, realistic touch, not plasticky



Lifelike flower buds – authentic and true-to-nature appearance



Thick foliage with subtle frosted finish – premium look, not the flimsy cheap kind



30325001-OR



True-to-life stem coloring with textured surface – no flat, fake plastic green



30325001-FU



30325001-OR

Artificial Magnolia Flower



Magnolia Artificial Flower-18.8

Item No.: 157051

Description

Bring natural elegance into any space with this lifelike Magnolia artificial flower. Crafted with soft-touch petals and realistic detailing, it's perfect for home décor. Enjoy long-lasting beauty with low maintenance.

Product Specification

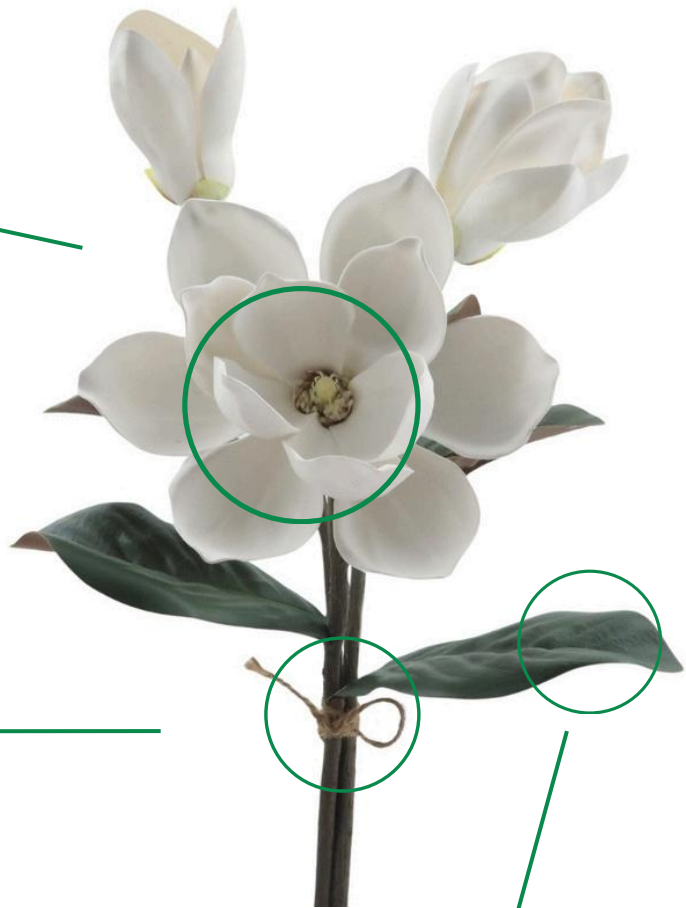
- 18.8" Tall
- Graceful Petal Curvature
- Polyethylene, Plastic, Wire
- Detailed Leaf Veining
- Natural Petal Color
- Finished with Rustic Jute Rope
- Wired stems are easy to bend.
- Size and color can be customized.



Artificial Magnolia Flower



PU-crafted petals with realistic color – soft, natural touch, not stiff plastic



True-to-life stem coloring with surface texture – no flat, fake plastic green



Flexible, natural-looking stems – bendable for easy arranging



Thick, textured foliage – premium feel, not the flimsy cheap kind

Artificial Forsythia Flowers



Real Touch Latex Faux Forsythia Flowers-38.1"

Item No.: 15825010

Description

Add a touch of spring elegance with our lifelike artificial Forsythia flowers. Designed for versatility and visual impact, they're perfect for floral arrangements, retail displays, or festive installations.

Product Specification

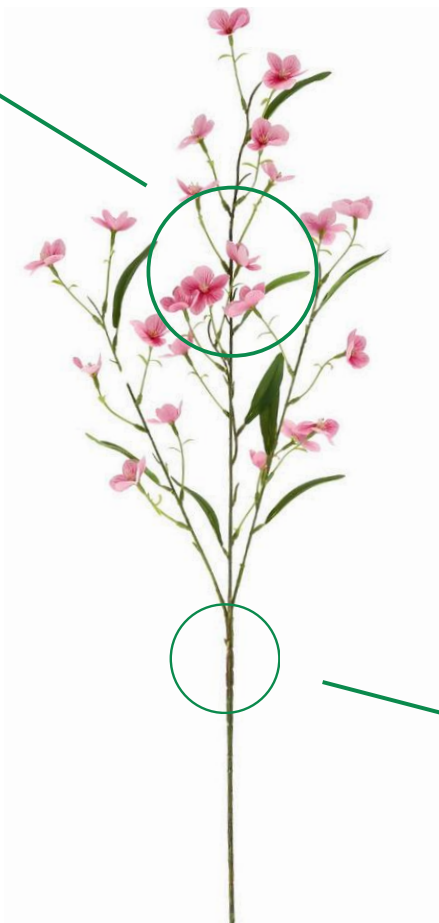
- Overall, 38.1" Tall
- 3 Forks
- Real Touch & Latex Material
- Rubberized Fabric Leaves
- Polyurethane, Plastic, Wire
- Available in 2 Colors
- Wired stems are easy to bend.
- Size and color can be customized.
- Packing: 120*52*52



Artificial Forsythia Flowers



Rubber fabric-crafted petals with a soft, natural touch – realistic feel, not plasticky



True-to-life stem coloring – no flat, artificial-looking green tones



Thick fabric foliage with natural texture – premium quality, not the flimsy cheap type



Realistic stems that bend naturally – flexible for effortless arranging



15825010-PK1



15825010-PK2

Artificial Lily Flower

2 Colors Real Touch Latex Artificial Lily Flower-32.2"

Item No.: 30025001

Description

Add vibrant color to any space with our high-quality artificial Lily flowers. Realistic texture, long-lasting freshness, and zero maintenance make them perfect for home, office, or event decor.

Product Specification

- Overall, 32.2" Tall
- 6.2"/7.8" Wide Bloom
- Real Touch & Latex Material
- Rubberized Fabric Leaves
- Polyurethane, Plastic, Wire
- Foam Bud
- Clear Texture
- Wired stems are easy to bend.
- Size and color can be customized.
- Packing: 112*38*64



Artificial Lily Flower



Latex-crafted petals with realistic color – soft, natural touch, not plasticky



Lifelike flower buds – authentic and true-to-nature detail



Thick fabric foliage with natural texture – premium quality, not the flimsy cheap type



True-to-life stem coloring – no flat, fake-looking plastic green



30025001-PK



30025001-WT



2 Heads Real Touch Iris Flowers Artificial for Home Decor-31.4"

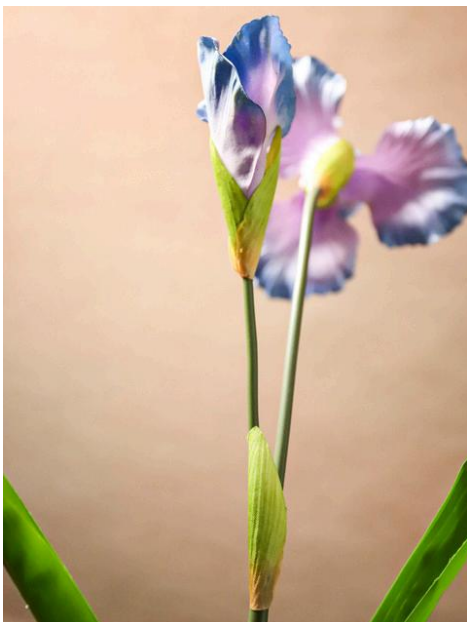
Item No.: 30425001

Description

Crafted with real touch petals, gradient-colored calyx, and lifelike foliage wrapped in tape and soft-coated stems, this 2-head artificial Iris offers elegant detail perfect for home decoration.

Product Specification

- Overall, 31.4" Tall
- Real Touch Petals
- Rubberized Fabric Leaves
- Rubber Tubing for styling
- Gradient-colored Sepals or Calyx
- Perfect for DIY Arrangements
- Wired stems are easy to bend.
- Size and color can be customized.
- Packing: 110*42*55
- Packaging Rate: 12*120



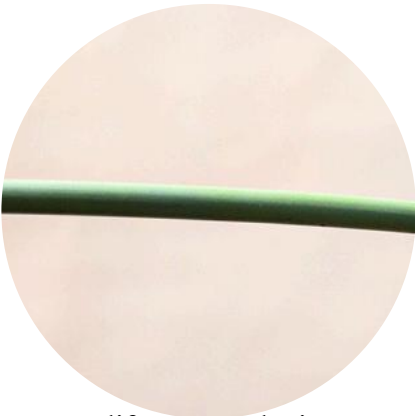
Artificial Iris Flowers



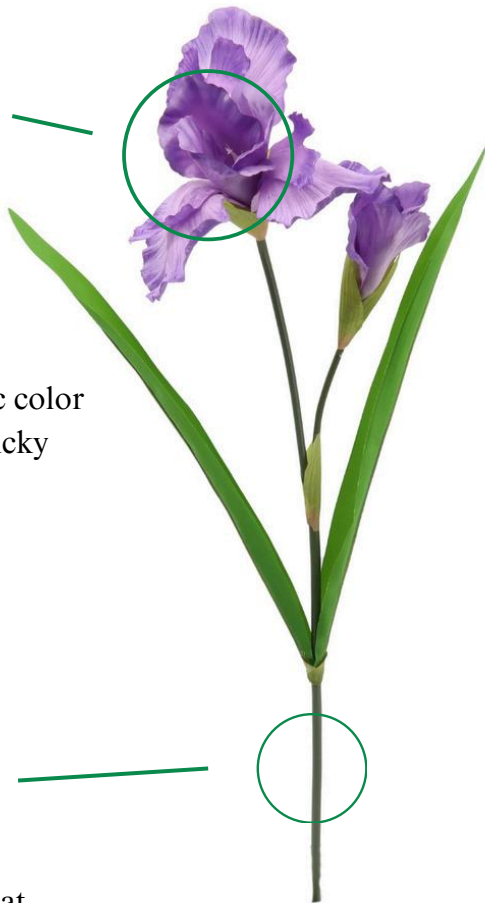
Fabric-crafted petals with realistic color
– soft, natural touch, not plasticky



Lifelike sepals – authentic
and true-to-nature detail



True-to-life stem coloring – no flat,
fake-looking plastic green



Thick fabric foliage with natural
texture – premium quality, not the
flimsy cheap type



30425001-PU



30425001-BL

Faux Phalaenopsis Orchid



7 Branches Faux White Phalaenopsis Orchid -29.1"

Item No.: 11025001-WT

Description

Add a touch of timeless elegance with this potted faux white Phalaenopsis Orchid. Featuring lifelike real-touch petals, EVA leaves, graceful rubber stems, and a ceramic bowl, it's the perfect accent for modern interiors.

Product Specification

- Overall, 29.1" Tall x 21.6" Wide
- Ceramic Bowl, 5.5" Tall x 11.8" Wide
- Real touch petals material with various siezs
- Realistic EVA leaves with foam finish
- Stem coated with rubber
- Pot filled with realistic moss
- Supported by natural bamboo stakes
- Raffia tie wraps real bamboo and floral stems together.
- Size and color can be customized.



Artificial Dahlia Flower

4-Head Artificial Dahlia Flower - 30.7"

Item No.: 18725062

Description

This lifelike 4-head artificial dahlia features a silk bloom and three budding companions. Crafted with flexible rubber tube stems and silk leaves, it mimics natural flowers. Stems use vertical and round rubber tubing for integrity. Custom color services are available for bulk orders.

Product Specification

- 30.7" Tall
- Bloom Clusters, 4.7" Wide
- 1 large bloom + 3 buds
- Silk petals & leaves
- Flexible rubber tube stems
- Vertical and round texture stems
- Custom color options and real touch latex material
- Packing: 126*62*63cm
- Packaging Rate: 16*320
- MOQ: 320pcs



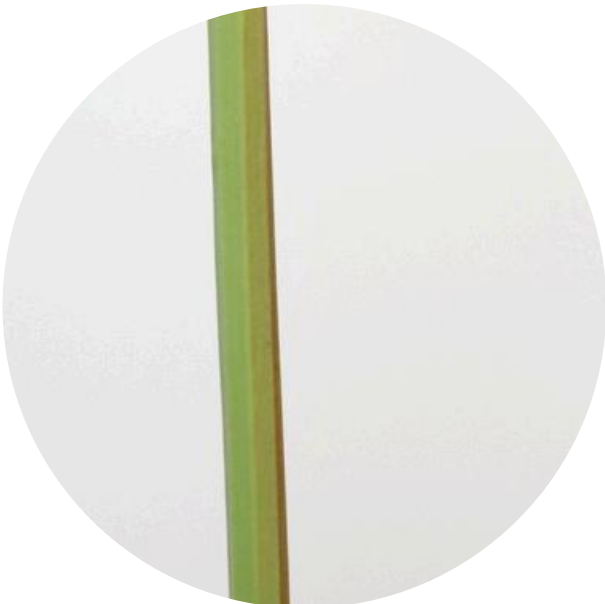
Artificial Dahlia Flower



Latex fabric-crafted petals
with realistic color – soft,
natural touch, not plasticky



Lifelike flower buds –
authentic and true-to-
nature detail



True-to-life stem coloring – no
flat, fake-looking plastic green



Thick fabric foliage with natural texture –
premium quality, not the flimsy cheap type

Artificial Peony Flower

Real Touch Latex Artificial Peony Flower - 22.4"

Item No.: 18725063

Description

This 17-color artificial peony features ultra-realistic real touch latex petals with intricate inner ruffles for dimensional depth. Optional rubber-coated stems available for enhanced durability in commercial use.

Product Specification

- 22.4" Tall
- Bloom Clusters, 5.5" Wide
- Real touch latex petals
- Full natural bloom
- Layered ruffled petals
- Silk-printed fabric leaves
- Wired stem, bend or cut with wire cutters
- Packing: 124*47*65cm
- Packaging Rate: 24*240
- MOQ: 240pcs



Artificial Peony Flower



Latex-and-fabric petals with realistic color – soft, natural touch, not stiff plastic or silk



Lifelike flower buds – authentic and true-to-nature detail



Thick silk-printed foliage – premium quality, not the flimsy cheap type



Naturally shaped stems with realistic branching – true-to-life form and structure



5-Color Real Touch Latex Austin Faux Rose - 25.2"

Item No.: 18725065

Description

This 25.2" artificial Austin rose features real touch latex petals with intricate inner ruffles for realism. The 4.7" bloom is paired with customizable leaves (rubberized fabric or silk-printed options) showing clear vein patterns. The wire stem accepts optional rubber coating for commercial durability.

Product Specification

- 25.2" Tall
- Bloom Clusters, 4.7" Wide
- Real touch latex petals
- Full natural bloom
- Layered ruffled petals
- Custom rubberized fabric/silk-printed leaves
- Clear Vein foliage
- Wired stem, bend or cut with wire cutters
- Packing: 119*42*65cm
- Packaging Rate: 24*240
- MOQ: 240pcs



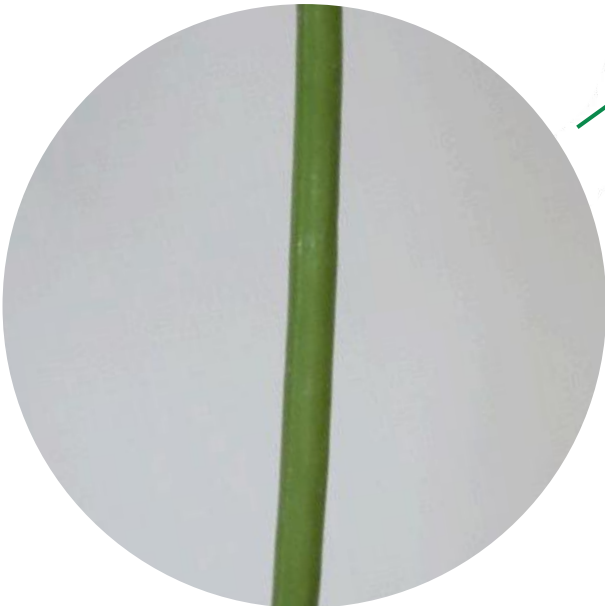
Austin Faux Rose



Latex-fabric petals with realistic color – soft, natural touch, not stiff plastic



Silk-printed foliage with authentic color – detailed veins, serrated edges, premium quality, not flimsy cheap type



True-to-life stem coloring – no flat, fake-looking plastic green



Naturally shaped stems with realistic branching – lifelike form and structure

Artificial Iris Flower



Realistic PU Artificial Iris Flower Stems with Textured Foliage - 27.6"

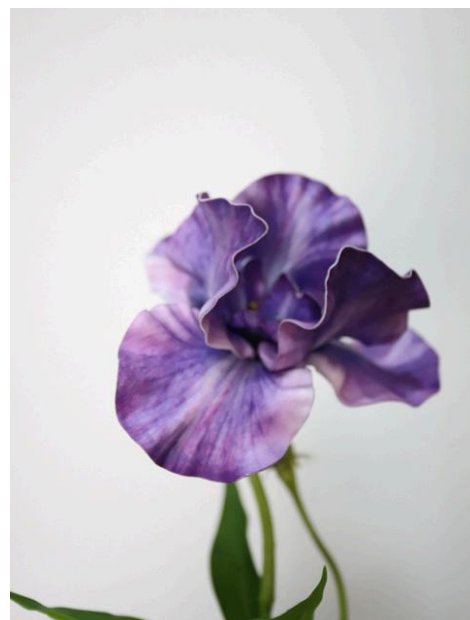
Item No.: 18725069

Description

This 27.6" artificial Iris flower stems feature embossed PU petals with natural curvature and color gradients. Four textured rubberized fabric leaves complement flexible wire stems. 3 color variants.

Product Specification

- 27.6" Tall
- Bloom Clusters, 6.2" Wide
- 1 bloom + 1 bud
- PU petals
- Rubberized fabric leaves
- Natural curvature shape
- Wired stem, bend or cut with wire cutters
- Packing: 118*85*70cm
- Packaging Rate: 44*352
- MOQ: 352pcs



Artificial Iris Flower



Butter-soft PU petals with micro-textured veining – luxuriously realistic touch, resists plastic shine



Naturally emerging buds – delicate gradient coloring, captures organic growth patterns



Authentic stem tonality – subtle grey-green hues with natural speckling, avoids flat plastic-green



Substantial sculpted foliage – deeply ribbed and thick to the touch, rejects flimsy plastic sheeting

Artificial Hydrangea Flower

3 Colors Rubber Artificial Hydrangea Flower - 28.7"

Item No.: 18725070

Description

Our 28.7" artificial hydrangea flower stems feature soft rubber blooms with natural color blending. Rubberized fabric leaves and detailed stems enhance realism. Crafted with clear vein details, every leaf and branch is designed to mimic the beauty of nature while ensuring long-lasting quality.

Product Specification

- 28.7" Tall
- 2 blooms (large + small)
- Soft rubber petals with natural color gradients
- Rubberized fabric leaves
- Rubber coated stems
- Premium craftsmanship for a lifelike and durable display
- Packing: 116*52*55cm
- Packaging Rate: 12*144
- MOQ: 144pcs



Artificial Hydrangea Flower



Pliable rubber petals with delicate veining – velvety matte finish, resists synthetic plastic shine



Substantial rubberized leaves – deeply textured and weighty, rejects thin plastic flatness



Botanically accurate stem gradient – organic transition from olive to burgundy, mirrors natural growth patterns



Earthy-toned flexible stems – subtle grey-green speckling, avoids artificial plastic uniformity

Artificial Clematis Flower

4 Colors Real Touch Latex Artificial Clematis Floral Stems - 31.5"

Item No.: 18725071

Description

This real touch latex artificial Clematis flower stem features color-gradient blooms with lifelike flower pistils. Rubberized fabric leaves with natural curvature. Either way, this exquisite stem will make a striking addition to any arrangement.

Product Specification

- 31.5" Tall
- Bloom Clusters, 5.1" Wide
- 3 real touch blooms (2 large + 1 small)
- Color-transition real touch latex petals
- Rubberized fabric foliage
- Optional stem coating
- Wired stem, bend or cut with wire cutters
- Packing: 115*83*67cm
- Packaging Rate: 24*192
- MOQ: 192pcs



Artificial Clematis



Silk-textured fabric petals with delicate veining – luxuriously soft, true-to-nature tactile experience



Substantial layered foliage – thick rubberized texture with deep veining, rejects flat plastic appearance



Botanically accurate calyx – naturally tapered sepals with subtle gradient coloring



Naturally toned flexible stems – matte olive-green finish, bends and holds shape effortlessly

Artificial Tulip

5 Color Options Soft Rubber Artificial Tulip Bouquet - 18.5"

Item No.: 18725072

Description

Our beautiful floral arrangement of artificial tulip flowers in a vase elevates your home decor and interior design. The faux tulips have realistic botanical details that make them a perfect replica of nature. Simply style this vase arrangement on your table or mantle to bring a permanent feeling of spring to your space!

Product Specification

- 18.5" Tall
- Bloom Clusters, 2.3" Tall
- 3 blooms + 2 buds
- Soft rubber material petals
- Color-transition blooms
- Soft rubber stems and leaves with premium quality
- Packing: 58*72*52cm
- Packaging Rate: 12*60
- MOQ: 60pcs



Artificial Tulip



Soft rubber petals with crisp veining – velvety matte texture, resists artificial plastic shine



Layered natural-toned blooms – subtle gradient transitions, mirrors fresh-picked vibrancy



Pliable rubber foliage – substantial thickness with deep veins, rejects flimsy plastic flatness



Authentic stem coloring – soft green with earthy undertones, avoids flat plastic uniformity

Artificial King Protea Flowers

4 Colors Faux Leucospermum Flowers - 25.2"

Item No.: 18725073

Description

This stunning faux summer floral is sure to elevate any home decor. The bloom and the thick stem with a gradient colors are stunning details that make it hard to believe these aren't real. High-quality materials make for a beautiful and unique flower.

Product Specification

- 25.2" Tall
- Bloom Clusters, 5.1" Tall
- Plastic material flower head with gradient color finish
- Silk-printed fabric foliage
- Thick stem with iron wire core and soft rubber coating
- Darkened root base
- Packing: 93*37*73cm
- Packaging Rate: 12*144
- MOQ: 144pcs



Artificial King Protea Flowers



Precisely textured plastic petals – velvety micro-ridged surface, resists artificial shine



Silk-screened fabric leaves – intricately printed venation, replicates mature leathery foliage



Authentically graduated stems – muted olive-to-russet transition, avoids flat plastic-green



Naturally toned flexible stems – matte olive-green finish, bends and holds shape effortlessly

Artificial Sunflowers

3 Colors Short Artificial Sunflowers - 15.4"

Item No.: 18725074

Description

Sporting elegant height and a life-like appearance, this yellow faux sunflower stem is a stunning recreation of nature's botanicals. Effortlessly style several silk sunflowers in a table vase to create the perfect centerpiece for summer-to-fall transitional decor.

Product Specification

- 15.4" Tall
- Bloom Clusters, 5.5" Wide
- Rubberized fabric material flower head with gradient color finish
- Realistic plastic centers
- Silk-printed fabric leaves with frosted effect
- Clear veining for a lifelike look
- Thick coated brown stems
- Packaging Rate: 24*240
- MOQ: 240pcs



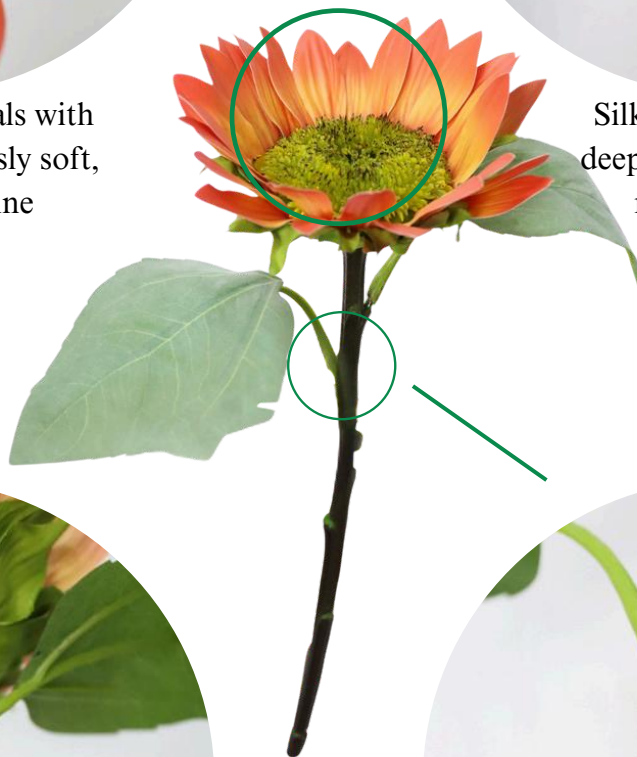
Artificial Sunflowers



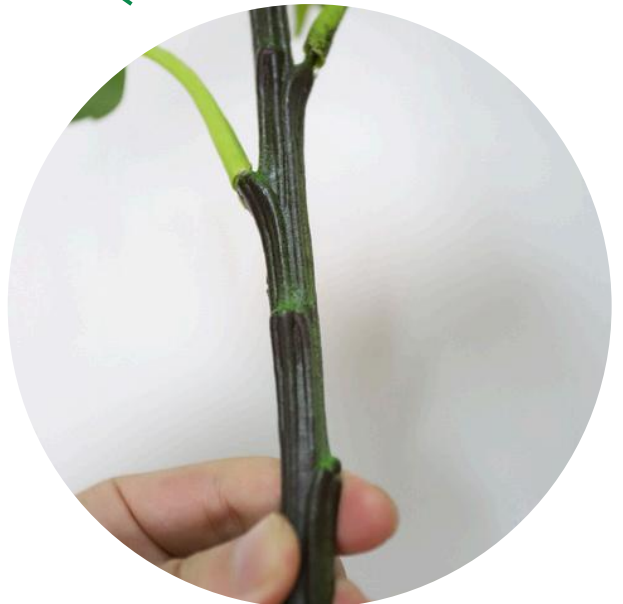
Velvety latex-finish petals with deep veining – luxuriously soft, resists synthetic shine



Silk-screened fabric leaves – deeply etched veins, replicates mature textural depth



Botanically accurate calyx and naturalistic head formation – tightly clustered center with organic asymmetry



Earthy gradient stems – subtle green-to-brown transition, avoids flat plastic-green uniformity



Real Touch Latex Artificial Sunflowers Stem - 26.8"

Item No.: 18725076

Description

This faux sunflower stem showcases stunning blooms with natural-looking green leaf foliage, capturing the beautiful seasonal transition from summer to autumn. Place one or two in a statement vase to create a table display that infuses every corner of your home with the warmth and beauty of nature.

Product Specification

- 26.8" Tall
- Bloom Clusters, 5.5" Wide
- Real touch latex petals
- Silk material calyx
- Silk-printed fabric serrated leaves
- Wired stems, bend or cut with wire cutters
- Packing: 94*51*74cm
- Packaging Rate: 12*144
- MOQ: 144pcs



Artificial Sunflowers



Velvety latex petals with intricate veining – luxuriously tactile, resists synthetic plastic feel



Botanically accurate center with orange-tipped granules – densely clustered, mirrors natural seed formation



Flocked silk-screened foliage – subtle fuzzy texture with deep embossed veining



Realistic vertically-ribbed stems – earthy gradient tones, avoids flat artificial green

Faux Casablanca Lily Flower



Faux Casablanca Lily Flower in 2 Colors -30.7"

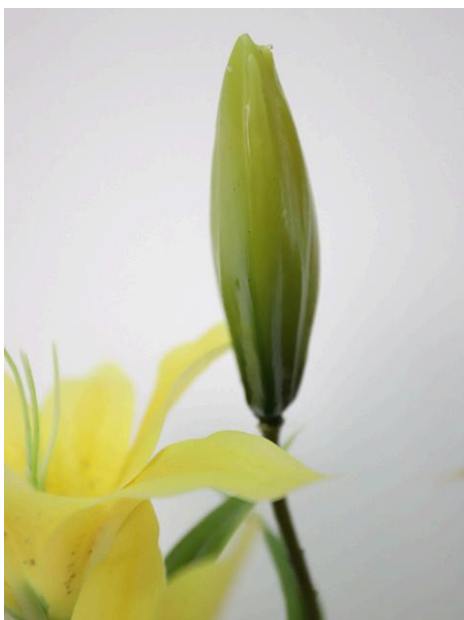
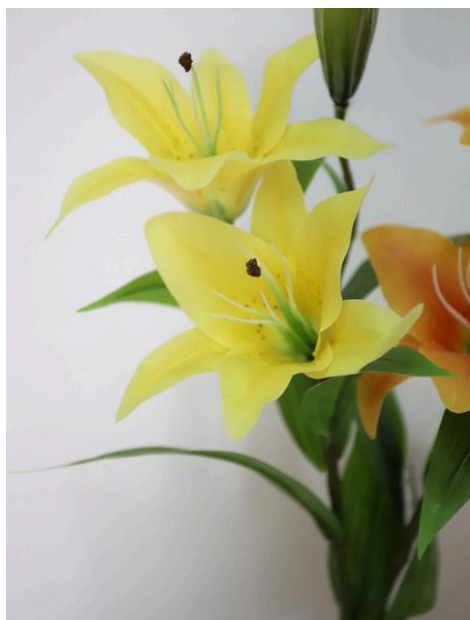
Item No.: 18725077

Description

Elevate your home decor and interior spaces with the most exquisite artificial botanicals like this elegant faux Casablanca Lily stem. A gorgeous faux flower with a showstopping full bloom, this lily has life-like details that recreate the look and feel of nature's florals. Style a few Lilies in a tall vase, and you have an eye-catching table centerpiece.

Product Specification

- 30.7" Tall
- Bloom Clusters, 5.5" Wide
- 2 blooms + 1 bud
- Rubberized fabric petals with brown spot
- Plastic frosted gradient buds
- Rubberized fabric leaves with clear vein
- Wired stem, bend or cut with wire cutters
- Packing: 104*56*44cm
- Packaging Rate: 24*144
- MOQ: 144pcs



Faux Casablanca Lily Flower



Silky latex-finish petals with delicate veining – luxuriously soft touch, resists synthetic shine



Naturally tapered buds with gradient blush – mimics organic growth patterns, avoids artificial uniformity



Substantial thickness foliage – deep matte finish with embossed veins, resists flimsy plastic feel



Realistic textured stems – earthy tones with subtle vertical striations, rejects flat plastic appearance

Artificial Banksia Spray



4 Colors Flocked Artificial Banksia Spray - 19.7"

Item No.: 18725078

Description

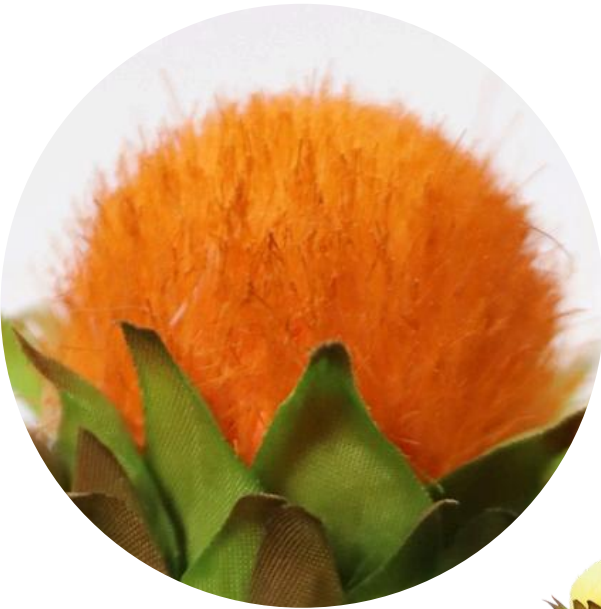
Remarkably realistic, these artificial Banksia botanicals are modelled on the most artistic, sculptural stems. Made with generously long stems with a wire core, they can be molded and shaped to fit your desired vessel.

Product Specification

- 19.7" Tall
- 1 bloom + 1 bud
- Flocked foam bloom
- Silk material calyx
- Silk-printed fabric foliage
- Wired stem, bend or cut with wire cutters
- Packaging Rate: 24*240
- MOQ: 240pcs



Artificial Banksia Spray



Velvet-flocked flower heads – densely textured surface, replicates natural fuzzy tactile quality



Silk-screened fabric leaves – intricately printed deep veins, mimics mature leathery foliage



Botanically accurate calyx – seamless green-to-rust gradient with organic speckling and subtle veining



Flexible textured stems – natural olive-brown tone with realistic ridges, holds graceful curves

Artificial Chinese Lantern Flower Stem



PU Artificial Chinese Lantern Flower Stem Spray - 36.6"

Item No.: 18725079

Description

Infuse your space with natural vibrancy using these PU artificial Chinese Lantern stem sprays. Inspired by the *Physalis* genus, these red-orange faux pods offer a bold pop of color for rustic arrangements or modern displays.

Product Specification

- 36.6" Tall
- 3 large + 5 small pods
- Natural color transitions
- Silk material foliage
- Wired stem, bend or cut with wire cutters
- Packing: 102*45*51cm
- Packaging Rate: 12*144
- MOQ: 144pcs



Artificial Chinese Lantern Flower Stem



Velvety latex pods with micro-textured surfaces – luxuriously tactile, resists artificial plastic shine



Naturally transitioning blush-toned calyx – seamless green-to-orange gradient, mirrors organic pigmentation



Heavyweight silk-screened leaves – deeply embossed veining, rejects flimsy synthetic flatness



Earthy textured stems – realistic woody brown striations, avoids flat plastic-green uniformity

Artificial Egyptian Dahlia

Realistic Artificial Egyptian Dahlia Flower Stem -35.4"

Item No.: 18725080

Description

Elevate your space with our stunning realistic artificial Egyptian Dahlia stem. Crafted to mimic the natural beauty of a real dahlia, this exquisite faux flower features one large flower head and one bud. It's perfect for creating beautiful bouquets, centerpieces, or adding a touch of elegance to any room.

Product Specification

- 35.4" Tall
- Bloom Clusters, 6.2" Wide
- Customizable silk or real touch material
- Gradient color petals
- Full, dimensional petals
- Foam core bud
- Brown stem with rubber tube
- Packing: 120*62*63cm
- Packaging Rate: 16*320
- MOQ: 320pcs



Artificial Egyptian Dahlia



Velvety latex petals with intricate veining – luxuriously tactile, resists artificial plastic shine



Naturally gradiented buds – softly blushed transitions, mirrors organic pigmentation patterns



Heavyweight silk-screened leaves – deeply embossed veins, rejects flimsy synthetic flatness



Earthy textured stems – subtle woody striations, avoids flat plastic-green uniformity



Real Touch Latex Faux African Daisy Stem - 24.8"

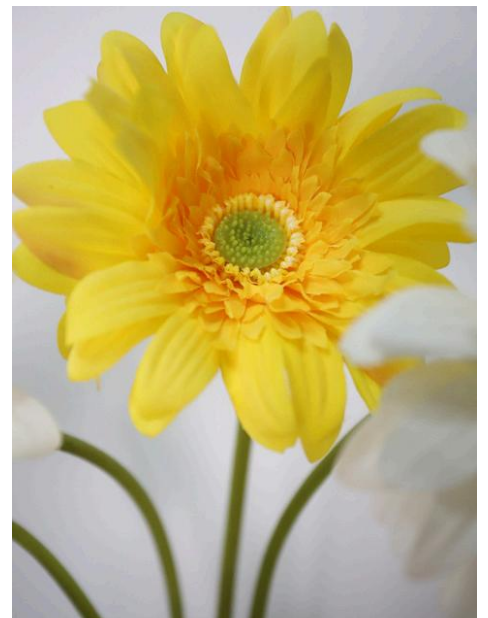
Item No.: 18725083

Description

Infuse your home with a pop of joyful color from our real touch latex faux African Daisy. At 63cm, this lifelike stem brings the vibrant spirit of a sunlit garden indoors. The petals, made from real touch latex material, are beautifully layered to create a full, natural look, while the soft, textured stem adds to its authentic charm.

Product Specification

- 24.8" Tall
- Real touch latex petals
- Natural petal layering
- Realistic plastic center and calyx
- Textured, soft rubber tube stem
- Packing: 92*47*66cm
- Packaging Rate: 24*288
- MOQ: 288pcs



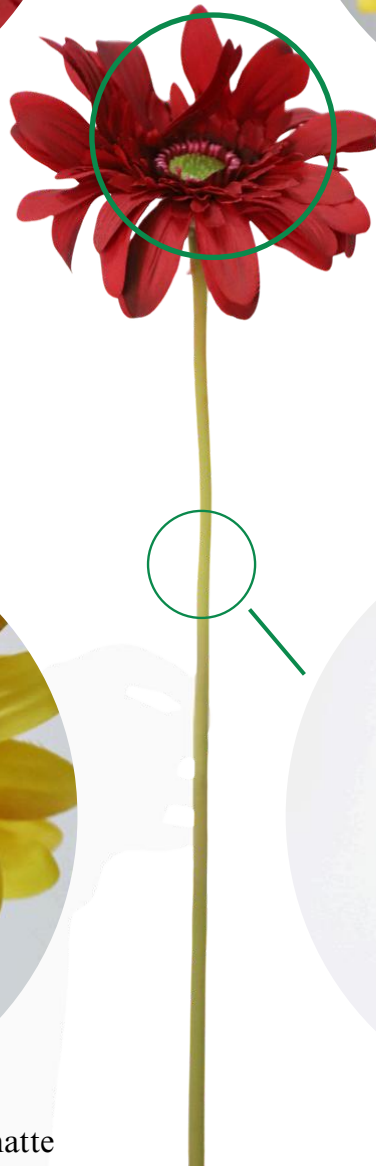
Faux African Daisy



Velvety latex petals with delicate micro-veining – luxuriously tactile surface, resists artificial plastic shine



Botanically accurate multi-toned center – intricate layered formation with organic color variation



True-to-life calyx and petal backs – matte finish with graduated pigmentation, mirrors fresh botanical specimens



Flexible rubber stems with subtle texture – realistic olive-green hue and natural micro-fuzz detailing

Artificial Daisy Flower

5 Stem Real Touch Artificial Daisy Flower Bunch -13"

Item No.: 18725084

Description

Brighten any space with our enchanting artificial Daisy flower. The petals are crafted from real touch material, arranged naturally. The flocked center and soft rubber stem enhance its authentic feel, while a rustic raffia tie holds the bunch together. Perfect for creating charming, effortless arrangements.

Product Specification

- 24.8" Tall
- Real touch petals
- Flocked flower center
- Soft rubber tube stem
- 5 stems with raffia tie
- Packing: 97*54*41cm
- Packaging Rate: 24*288
- MOQ: 288pcs



Artificial Daisy Flower



Latex silk-textured layered petals – dimensional arrangement with organic softness, resists flat artificial appearance



Botanically precise calyx – naturally tapered sepals mimicking live growth patterns



Artisanal raffia-wrapped five-stem bundle – secure natural fiber tying, ensures rustic yet elegant presentation



Flexible rubber-sleeved stems – subtle matte finish, allows lifelike positioning without plastic rigidity

Faux Anthurium



Realistic PVC Faux Anthurium Stem -28.7"

Item No.: 18725085

Description

Our realistic faux Anthurium stem is designed to capture the true beauty of the living plant. Made from high-quality PVC, the flower features clear veins and a natural curve that mimics real growth.

Product Specification

- 28.7" Tall
- PVC material
- Clear embossed veins
- Naturally curved shape
- Natural color transitions
- Gradient brown to green stem with rubber tube
- Wired stem, bend or cut with wire cutters
- Packing: 102*42*41cm
- Packaging Rate: 24*144
- MOQ: 144pcs



Faux Anthurium



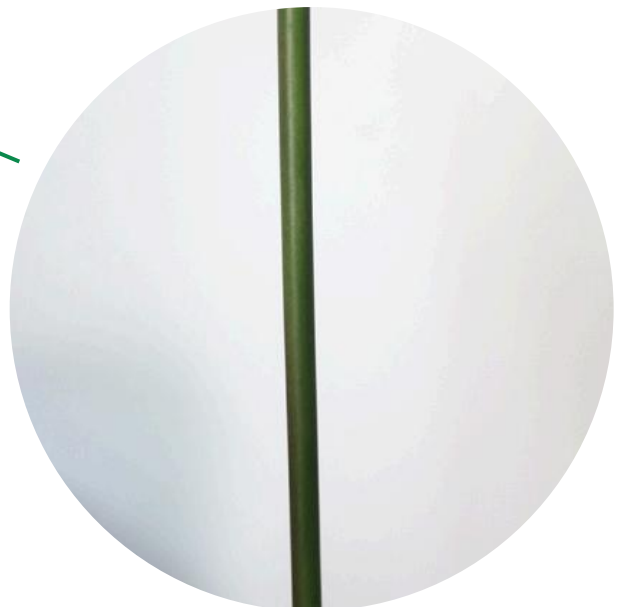
Velvety soft-touch surface with precise embossing – captures natural texture and organic gloss gradient



Naturally undulating curve to the spathe – mirrors live growth patterns with botanical accuracy



Seamless color transition from base to tip – rich crimson blending into subtle green undertones



Wire-reinforced rubber stem – dual-tone brown-to-green fade with realistic matte texture

Faux Anthurium



Realistic PVC Faux Anthurium Stem with Natural Curves - 29.1"

Item No.: 18725086

Description

Our faux Anthurium brings the beauty of this unique plant to any decor. The PVC material features clear embossed veins and a natural, elegant curve, while the smooth color transitions give it a captivating, lifelike appeal.

Product Specification

- 29.1" Tall
- PVC material
- Clear embossed veins
- Naturally curved shape
- Natural color transitions
- Solid black stem with rubber tube
- Wired stem, bend or cut with wire cutters
- Packing: 102*42*41cm
- Packaging Rate: 24*144
- MOQ: 144pcs



Faux Anthurium



Soft rubber texture with precise embossing – velvety matte finish, captures organic vein details



Naturally curved spathe with fluid contours – mirrors live growth patterns and movement



Subtly gradiented spathe back – deep matte transitions with intricate textural detailing



Reinforced rubber-sheathed stems – flexible yet sturdy black finish with subtle texture

Faux Pincushion Protea



Realistic Plastic Flower Faux Pincushion Protea Stem - 24"

Item No.: 18725087

Description

Bring the charm to your space with our faux Pincushion Protea. This 61cm stem captures the unique of this remarkable bloom. The flower head features color transitions, while the soft rubber leaves have a delicate frosted finish. The brown stem adds an authentic, natural feel to any arrangements.

Product Specification

- 24" Tall
- Bloom Clusters, 3.5" Wide
- Plastic flower head
- Natural color transitions
- Frosted soft rubber leaves
- Wired stem, bend or cut with wire cutters
- Packing: 83*42*59cm
- Packaging Rate: 24*240
- MOQ: 240pcs



Faux Pincushion Protea



Precisely molded plastic florets with seamless color gradient – velvety micro-textured surface, resists artificial shine



Botanically accurate calyx and stem junction – natural scarring and subtle tonal variations, mimics organic growth



Frosted soft-rubber leaves – matte chalky finish with delicate veining, replicates natural leaf bloom



Textured brown plastic-wrapped iron stem – deep vertical striations and earthy tones, ensures structural authenticity

Faux Ranunculus



Real Touch Lifelike Faux Ranunculus Flower Stem - 22"

Item No.: 18725088

Description

This 22" flower stem is designed to perfection, featuring one stunning flower head and a realistic bud. The petals, made from real touch latex material, have a clear and intricate texture that feels just like a living flower, making it a beautiful and effortless addition to any design.

Product Specification

- 22" Tall
- Bloom Clusters, 3.5" Wide
- 1 bloom +1 bud
- Real touch latex petals
- Clear petal texture
- Flocked silk material calyx
- Soft rubber leaves
- Wired stem, bend or cut with wire cutters
- Packing: 90*50*60cm
- Packaging Rate: 24*288
- MOQ: 288pcs



Faux Ranunculus



Silk-latex fabric petals with intricate veining – luxuriously layered structure, resists plastic shine



Velvet-flocked calyx and buds – silk-satin base with natural gradient transition



Pliable rubber leaves – matte finish with subtle pale bloom and deep embossed texture



Textured plastic-wrapped iron stem – flexible yet sturdy, mimics organic stem posture



Real Touch Latex Faux Ranunculus Stem -24.8"

Item No.: 18725089

Description

Standing at 24.8 inches, this stem is designed to perfection, featuring one stunning flower head and a realistic bud. The petals, made from real touch latex, have a clear texture that feels just like a living flower. The leaves and stem are a soft, flocked material, adding to its lifelike feel, making it an effortless addition to any design.

Product Specification

- 24.8" Tall
- Bloom Clusters, 3.9" Wide
- 1 bloom and 1 bud
- Real touch petals with clear texture
- Flocked silk calyx and leaves
- Soft rubber-coated wire stem
- Flocked stem and leaves
- Packing: 81*51*54cm
- Packaging Rate: 24*240
- MOQ: 240pcs



Latex-silk layered petals with intricate veining – luxuriously soft, dimensional bloom structure



Delicate silk-satin calyx and buds



Frosted silk-finished leaves – matte chalky surface



Velvet-flocked flexible stem – realistic tactile finish

Artificial Dahlia Flower

Real Touch Artificial Dahlia Flower Stem -21.3"

Item No.: 18725090

Description

Experience the romantic charm of a fresh-cut dahlia with our exquisite real touch Dahlia silk flower. At 21.3 inches, this beautiful stem features one large bloom and three delicate buds, creating a natural, bountiful look.

Product Specification

- 21.3" Tall
- Bloom Clusters, 5.9" Wide
- 1 bloom and 3 buds
- Real touch latex petals
- Natural color transitions
- Curved silk-printed leaves
- High-quality, textured brown stem
- Packing: 108*59*57cm
- Packaging Rate: 24*240
- MOQ: 240pcs



Artificial Dahlia Silk Flower



Latex-silk textured petals with seamless gradient coloring – each layer pre-shaped for dimensional fullness and organic softness



Botanically accurate calyx and stem joint – natural subtle veining and matte finish, replicates fresh growth



Silk-screened leaves with permanent natural curvature – retains lifelike arching form with delicate frosted texture



Reinforced thick stem with gritty brown coating – premium durability and realistic woody tactile finish

Artificial Blueberry Branch

Frosted Artificial Blueberry with Rubber Leaves - 26.8"

Item No.: 18725066

Description

Our artificial blueberry stems feature realistic frosted foam berries and soft rubber leaves. Simply style a few of these elegant berry stems in a vase, and you have a full arrangement ready to display as a table centerpiece that elevates any space in your living room.

Product Specification

- 26.8" Tall
- Foam berries material
- Frosted surface coating
- Soft rubber foliage
- Matte black stem
- Available in five colors
- Wired stem, bend or cut with wire cutters
- Packing: 103*58*47cm
- Packaging Rate: 50*500
- MOQ: 500pcs



Artificial Blueberry Branch



Pliable rubber leaves with subtle veining – lifelike flexibility, resists rigid plastic feel



Dusty frosted berries – natural bloom simulation, no overly glossy artificial shine



Realistic earthy brown stems – woody texture and tones, avoids artificial green plastic



Organically irregular branching – asymmetrical growth pattern, mirrors wild-grown shrubs

Artificial Blueberry Branches



4 Colors Frosted Artificial Blueberry Branches - 26.8"

Item No.: 18725067

Description

This 26.8" artificial blueberry stem features frosted foam berries and soft rubber leaves. Stems with coated brown finish ensure realism. 4 seasonal color options.

Product Specification

- 26.8" Tall
- Frosted foam berries
- Soft rubber foliage
- Granular-textured coating
- Matte brown finish
- Wired stem, bend or cut with wire cutters
- Packing: 103*58*47cm
- Packaging Rate: 50*500
- MOQ: 500pcs



Artificial Blueberry Branches



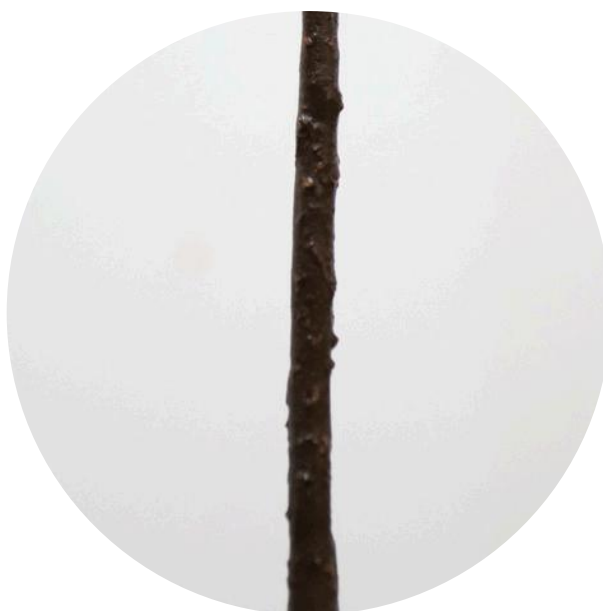
Pliable rubber leaves with subtle veining – lifelike flexibility, resists rigid plastic feel



Dusty frosted berries – natural bloom simulation, no overly glossy artificial shine



Organically irregular branching – asymmetrical growth pattern, mirrors wild-grown shrubs



Realistic earthy brown stems – woody texture and tones, avoids artificial green plastic

Faux Eucalyptus Pod Stem

Faux Eucalyptus Pod Stem with Textured Artificial Branch - 27"

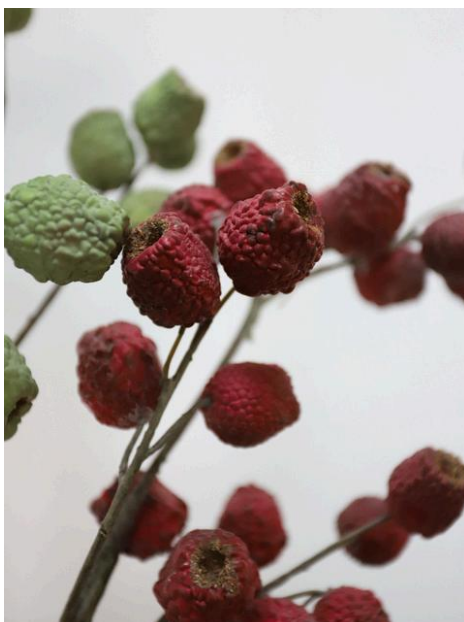
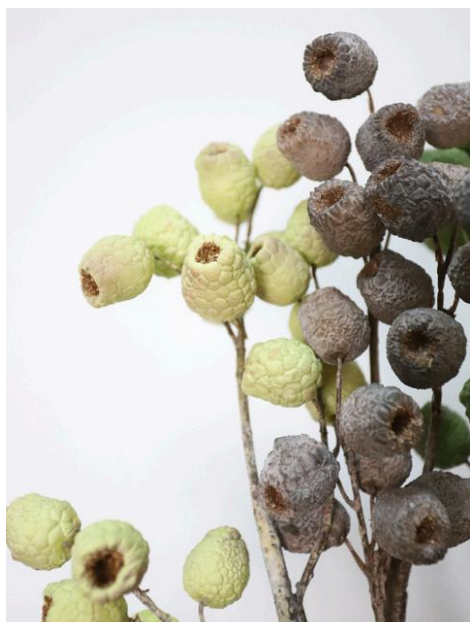
Item No.: 18725081

Description

Add a touch of rustic charm to your decor with our faux Eucalyptus fruit branch. Standing at 27 inches, this beautiful stem features lifelike foam pods with a frosted, textured surface for an authentic feel. The light green stem is coated with a high-quality, textured finish, creating a realistic look.

Product Specification

- 27" Tall
- Foam pods with a frosted, bumpy texture
- Frosted surface on pods
- High-quality textured light green stem
- Packaging Rate: 48*480
- MOQ: 480pcs



Faux Eucalyptus Pod Stem



Botanically accurate brown-tipped stamens – intricately detailed ends, replicates organic growth patterns



Textured foam pods with matte bloom finish – natural uneven granular surface, resists artificial shine

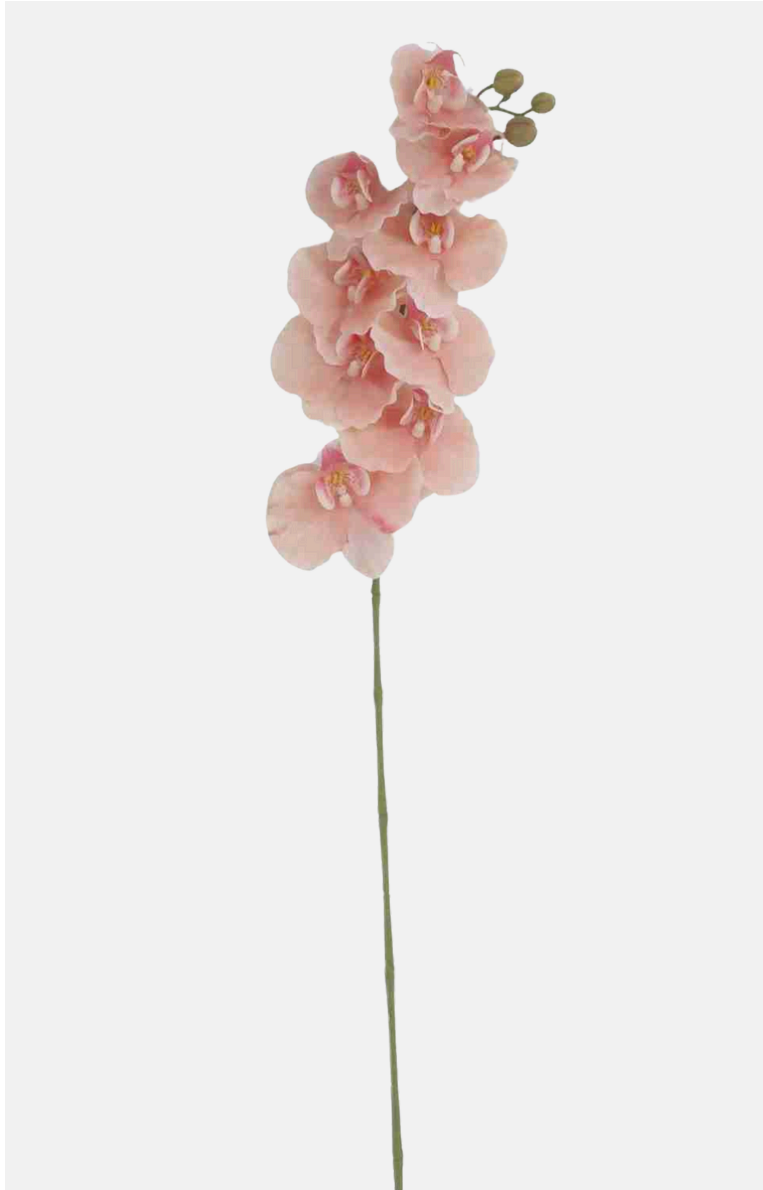


Naturally toned woody branches – realistic earthy undertones, avoids flat plastic-green uniformity



Premium coated stems – subtle pale green gloss with tactile grain, ensures high-end durability

Artificial Phalaenopsis Orchid



Faux 9-Head Phalaenopsis Orchid - 38.5"

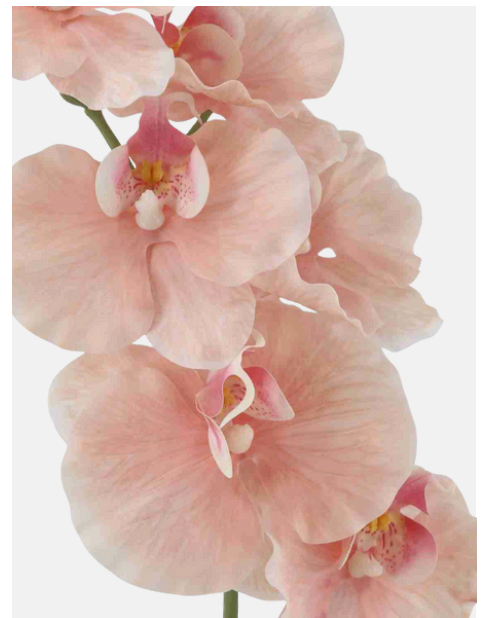
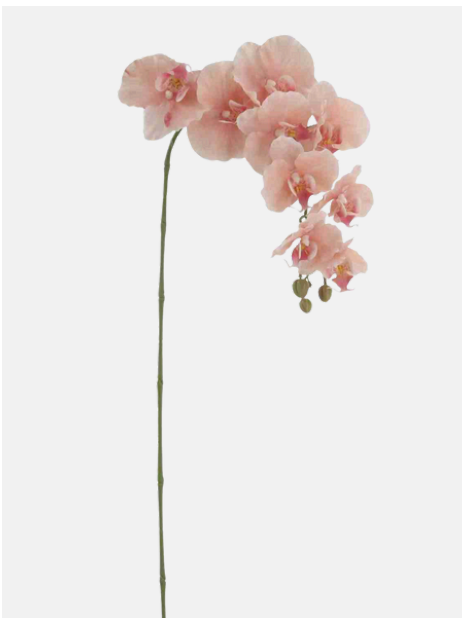
Item No.: 18725025-PK

Description

This stunning 9-Head Phalaenopsis Orchid offers exceptional realism and grace with its real touch petals and intricate detail. It provides an effortless, luxurious focal point that brings timeless elegance to any setting.

Product Specification

- Overall, 38.5"/98cm Tall
- Features nine realistic blooms.
- Petals made from film/rubber material with a natural feel, clear veins, and color transition.
- Realistic flower centers and plastic buds with natural color gradient.
- Wire-and-plastic stem for easy bending and flexible arrangement.



Real Touch Faux Tulip Single Stem -26.3"

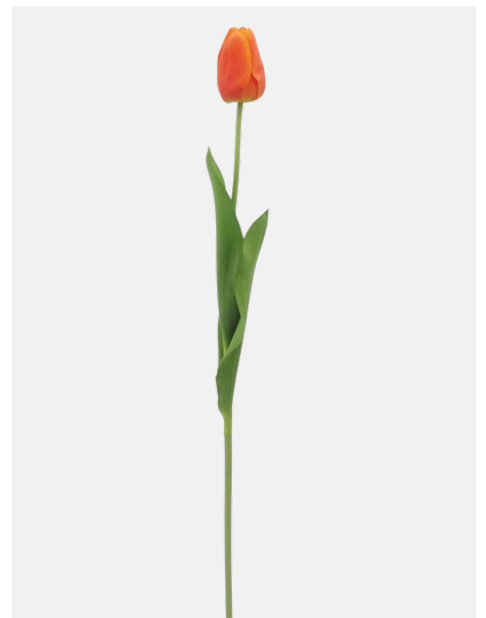
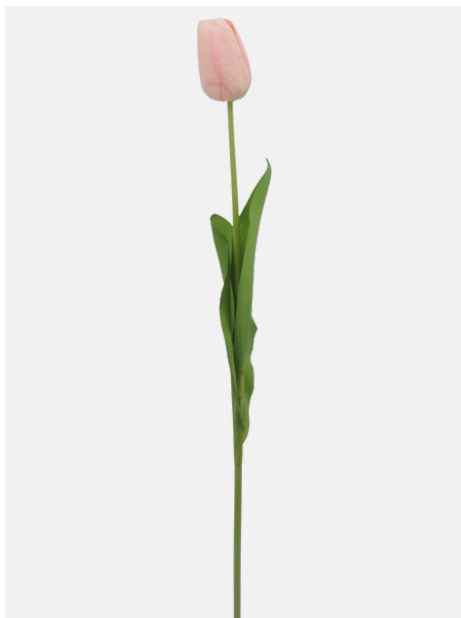
Item No.: 187HR10053-YW
187HR10054-PK
187HR10055-OR

Description

The bloom features real touch petals for a truly authentic feel and clearly veined foliage. Finished with a natural, soft-touch stem without any plastic look, this timeless piece adds a touch of fresh, sophisticated beauty.

Product Specification

- Overall, 26.3"/67cm Tall
- Real touch petals
- Soft rubber sleeve stem in a fresh, tender light green color.
- Realistic and non-plastic appearance.





Faux Delphinium Flower Spray -27.5"

Item No.: 148WG20016138

Description

This features multiple layers of delicate, lifelike blooms that capture the airy grace and natural movement of the real flower. It offers a stunning vertical accent and a refreshing splash of color, providing a romantic and effortless addition to any sophisticated floral arrangement.

Product Specification

- Overall, 27.5" / 70cm Tall
- Real touch petals
- Wired stems, bend or cut with wire cutters



148WG20016138-PU2



148WG20016138-PU1



148WG20016138-PK2



148WG20016138-PK1



148WG20016138-BL



148WG20016138-CH



148WG20016138-WT

Artificial Delphinium Flower



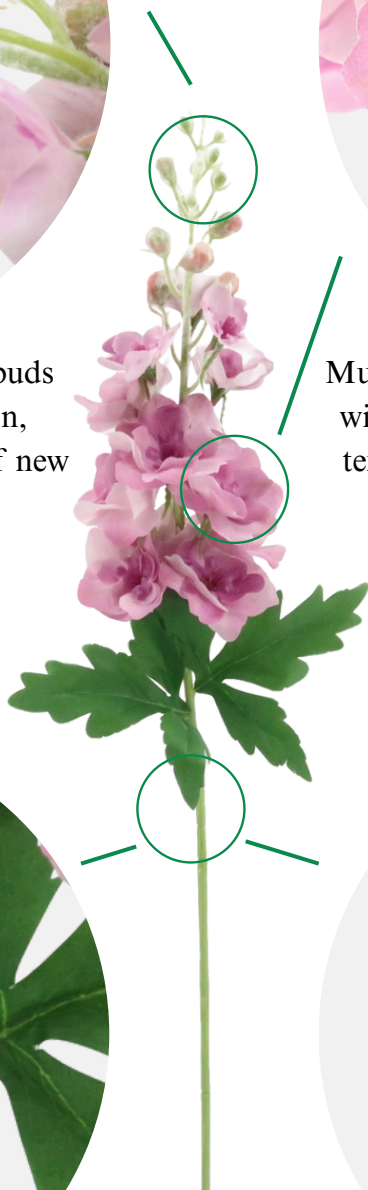
Intricately detailed flower tips and buds with a soft, natural color transition, replicating the delicate appearance of new growth.



Multiple layers of high-quality textile petals with subtle veining and a smooth, elegant texture, resisting fraying and maintaining shape.



Features large, realistic palmate leaves with deep segmentation and clear, matte green tones, avoiding the flat, glossy look of cheap plastic.



Firm, wire-reinforced stem coated in a soft, natural-toned green, providing structural integrity and a realistic look for easy arrangement.
